



Atlas Copco



Transportation

Atlas Copco industrial drive solutions

Light, compact and powerful air drive units for transportation

In the transportation application our air motors are used to transport materials through a factory or on an assembly line. It includes material handling, trolleys, reels, conveyors and many more applications.



Transportation



Manipulator Arm



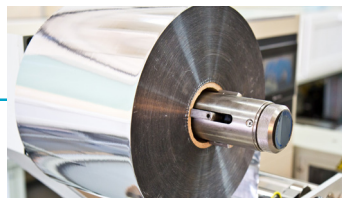
Traction Trolley



Reel



Conveyor



Tensioners



Use our Selection Tool to choose the right motor for your application



Download our catalog to see the complete air motors range

Manipulator Arm

Air drive solutions with excellent power to weight ratios

Manipulator arm applications require lightweight air motors that are reliable and powerful. Applications where Atlas Copco air motors are ideal include clamping, rotating, positioning and balancing.



Important values:

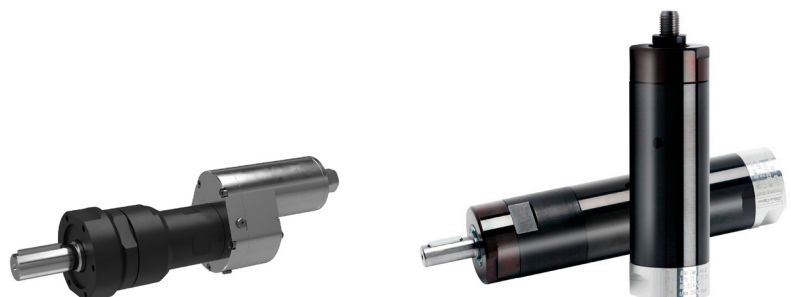
- Compact and up to 6 times lighter than electric drive units
- Easy to install and simple to control
- ATEX certified
- Industry-leading shaft loading capacity

Accessories:

- Stainless steel motor cell
- Filter regulator and lubricator
- Flange and foot mountings

Popular motors for the application:

- PZB15
- PZB21
- LZB22
- LZB33
- TZB25



Trolley

Air drive solutions for heavy loads in hazardous environments

To be effective, trolley drives require a combination of high starting torque and controllability. Atlas Copco air motors are ideal for trolleys carrying heavy loads in hazardous environments and ATEX zones.



Important values:

- Compact, lightweight motors - easy to mount in tight spaces
- Strong, stable starting torque characteristics ensure reliable performance
- Easy to control direction and start-stop with pneumatic valves
- Lubrication free operation for food processing, chemical and finishing operations
- ATEX and IP certification that suit almost any application

Accessories:

- Stainless steel motor cell
- Flange/foot mounting
- Specialized front part and output shaft*
- FRL
- High quality air fittings and hoses

** Please contact your local Atlas Copco sales representative for more information.*

Popular motors for the application:

- LZB22 stainless steel
- LZB33 brake models
- PZB09,15,21
- LZL range
- LZL with gearbox



Reeling

Air drive units with stable performance for continuous productivity and safe operation

Hose and cable reels keep work areas safe and increase productivity. Air motors are typically used to retract heavy cables and hoses in a safe manner. Durability, robust design and unique torque characteristics make Atlas Copco air motors a popular solution for reeling applications.



Important values:

- High starting torque and compact design, thus easy to install in tight spaces
- Industry-leading energy efficiency that reduces operating costs
- Stainless steel motor cells increase reliability
- Lubrication free operation
- Global network to support aftersales

Accessories:

- Stainless steel motor cell
- 90° angle kit with square drive output shaft
- FRL
- High quality air fittings and hoses
- Foot mounting

Popular motors for the application:

- LZB22 high torque units
- LZB33
- PZB15 bearing flange version
- PZB21 bearing flange version
- LZB46
- LZL range



Conveyors

Air drive units for smooth, safe product conveyors

Uncontrolled conveyor movement can cause product spillage or damage to the products conveyed. Our range of air motors can increase and decrease speed without jerking to ensure productivity and minimize losses.



Important values:

- Stepless and controllable speed, easy to change direction
- Can be stalled without damage to the drive
- Both external and internal parts are stainless steel, perfect for corrosive and wet environments
- ATEX certification and IP rating for safe, trouble-free operation
- Lubrication free operation for food and chemical production

Popular motors for the application:

- LZB22 stainless steel motors
- LZB33 brake models
- LZL05 stainless steel motors
- LZL with helical gears
- PZB range of motors

Accessories:

- Stainless steel motor cell
- 90° angle kit with square drive output shaft
- FRL
- High quality air fittings and hoses



Tensioning

Air drive units optimized for low speed control

Tensioning of bulk material during the production process increases safety and decreases losses. In such applications, the air motor acts as a brake and ensures that tension is kept on the rolled material.



Important values:

- Can be stalled indefinitely without damage
- Easy to control the required torque by throttling or pressure regulation
- ATEX certified for hazardous work areas
- Lubrication free operation

Accessories:

- Stainless steel motor cell
- FRL
- High quality air fittings and hoses

Popular motors for the application:

- LZB14
- LZB22
- LZL range
- PZB range





Atlas Copco AB

(publ) SE-105 23 Stockholm, Sweden

Phone: +46 8 743 80 00

Reg. no: 556014-2720

atlascopco.com

