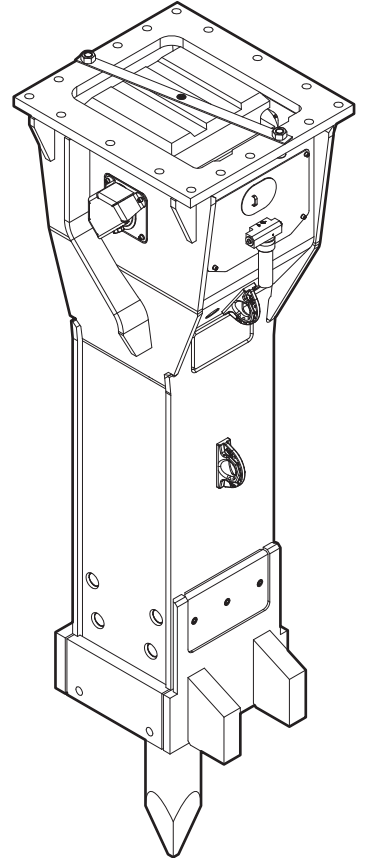


Spare parts list Hydraulic breakers

	Valid from serial number
HB 10000 DP	DEQ121277



Contents

General note.....	5
Spare parts list.....	6
Hydraulic breaker HB 10000 DustProtector.....	6
Percussion unit part 1: cylinder cover.....	8
Percussion unit part 2: cylinder.....	12
Percussion unit part 3: lower breaker part.....	14
Connecting kit for ContiLube® II.....	16
StartSelect - AutoStart or AutoStop.....	18
Optional parts.....	20
Tightening torques.....	21
Working tools.....	22
HB 10000 DustProtector.....	22
Accessories.....	23
Hydraulic hoses.....	23
Optional equipment.....	23
Kits.....	24
Label kit HB 10000 DustProtector.....	24
Seal kit.....	25
Seal kit for swivel joint (ContiLube® II).....	25
Plastic parts kit.....	26
Tensioning bolt kit.....	26
DustProtector kit.....	26
Noise protection kit.....	26
Lower breaker part kit DustProtector (bronze).....	27
Lower breaker part kit DustProtector (steel).....	27
Fastening screw kit.....	27
Accumulator repair kit.....	28
Dimensions.....	29
Dimensions HB 10000 DustProtector.....	29

General note

This spare parts list applies to the following:

Part number	Description
3363 1003 91	Hydraulic breaker HB 10000 DustProtector

Use only authorized parts. Any damage or malfunction caused by the use of unauthorized parts is not covered by Warranty or Product Liability. Any unauthorized use or copying of the contents or any part thereof is prohibited. This applies in particular to trademarks, model denominations, part numbers, and drawings.

Instructions for use

This spare parts list contains no safety regulations and is merely intended to assist in the ordering of spare parts.

For information on operating, servicing, or repairing, the relevant Safety and operating instructions must be consulted at all costs.

Please observe the safety instructions listed in the relevant Safety and operating instructions!

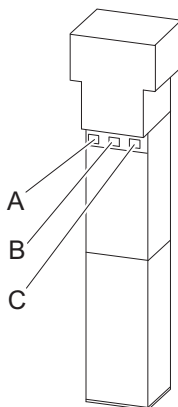
Instructions of ordering

It is essential to indicate the serial number of the hydraulic attachment when ordering spare parts!

Please note the full identification number of your hydraulic attachment. This code can be found on the cylinder.

Determine the quantity of individual parts which are required and need to be ordered. The order must indicate the following details:

- full identification code of the hydraulic attachment
- required quantity
- part number
- description

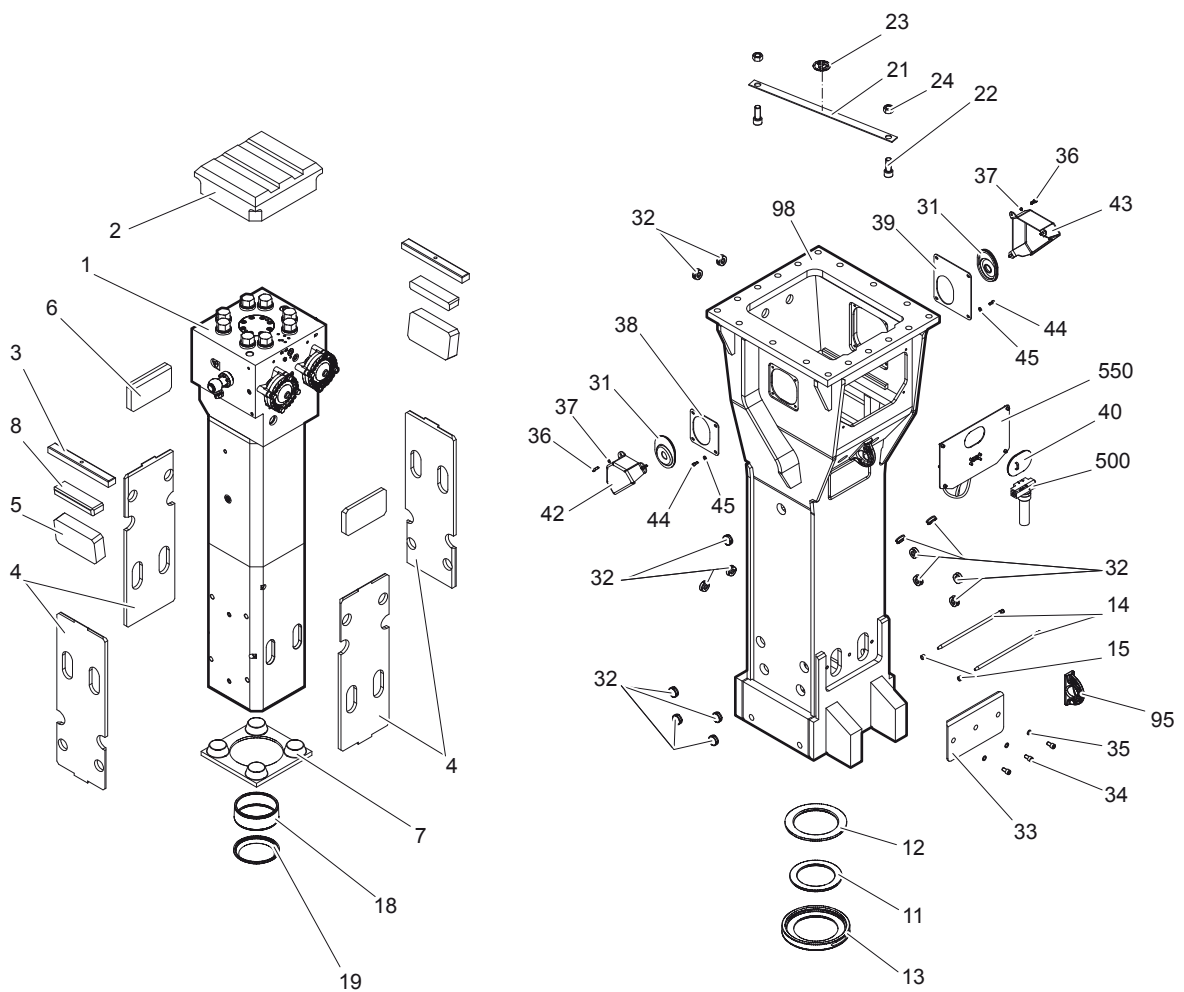


- A. Cylinder number
- B. Type
- C. Serial number

Spare parts list

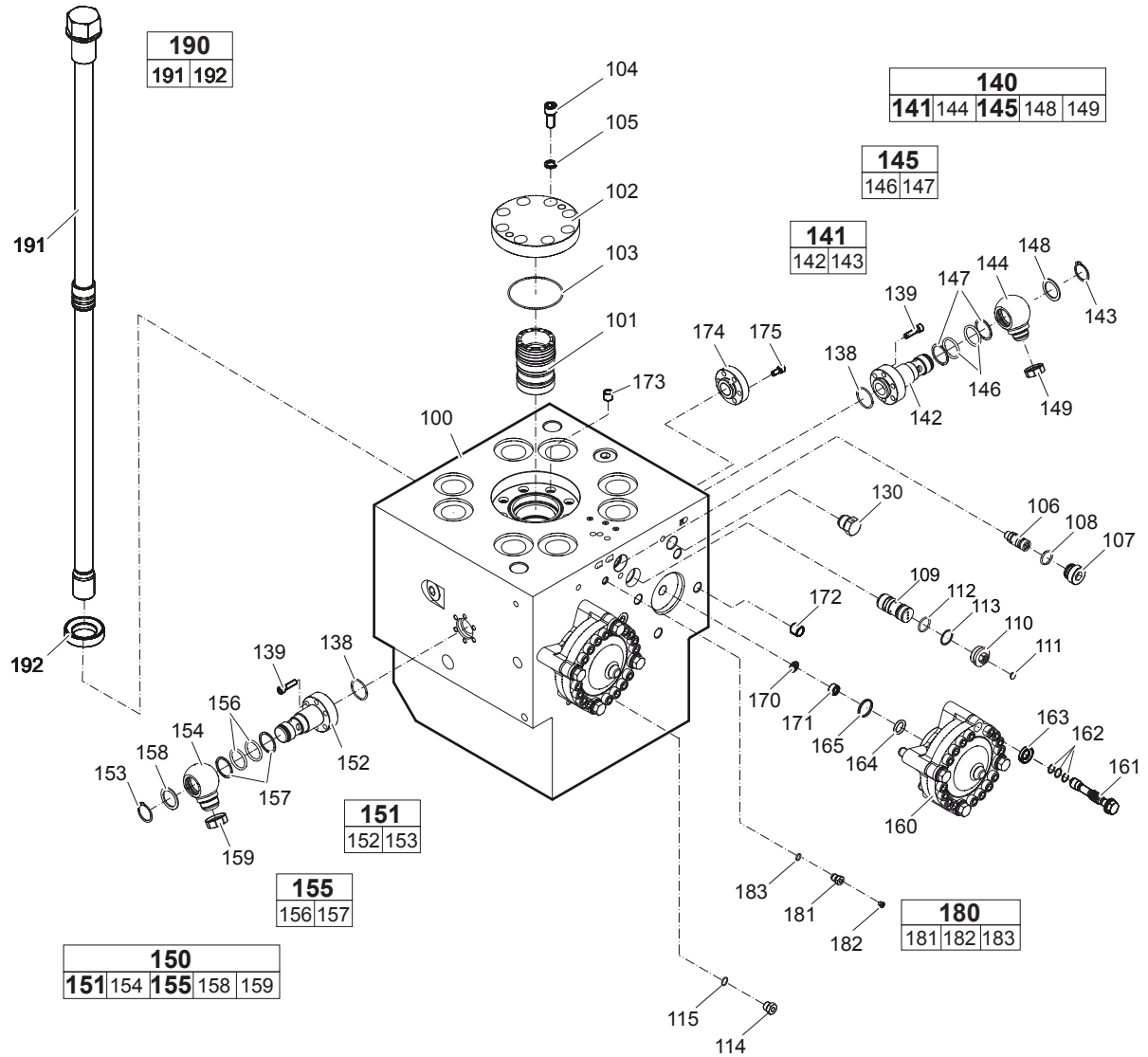
Hydraulic breaker HB 10000 DustProtector

20			
21	22	23	24



No.	Description	Remark	Quantity	Part number
1	Percussion unit	see separate chapter	1	-
2	Elastic pad		1	3363 0929 57
3	Shock absorber		2	3363 0938 53
4	Guide plate		4	3363 0938 55
5	Guide plate		2	3362 2626 67
6	Guide plate		2	3362 2626 65
7	Guide plate		1	3363 1007 13
8	Plate		2	3363 1007 77
11	Floating ring	tribolid steel see chapter <i>Optional parts</i>	1	3363 1007 01
12	Counter ring		1	3363 1007 03
13	Guide ring		1	3363 1007 05
14	Bolt		2	3363 1007 07
15	Locking bush		2	3361 8543 63
18	Base for wiper		1	3363 1007 09
19	Wiper		1	3363 1007 11
20(21-24)	Transport safety device complete		1	3363 0948 25
21	Transport safety device		1	-
22	Allen screw		2	3360 1141 51
23	Label transport safety device		1	3363 0918 72
24	Nut		2	3360 1032 55
31	Cover		2	3363 0311 81
32	Plug		15	3363 0860 17
33	Plate		1	3363 0938 27
34	Allen screw		3	3363 0830 07
35	Pair of lock washers		3	3361 8507 48
36	Allen screw		6	3360 1037 51
37	Pair of lock washers		6	3361 8505 96
38	Plate		1	3363 0988 30
39	Plate		1	3363 1032 87
40	Cover		1	3363 0926 97
42	Swivel joint cover		1	3363 1114 67
43	Swivel joint cover		1	3363 1114 72
44	Allen screw		2	3360 1037 50
45	Pair of lock washers		2	3363 1112 96
95	Lifting eye	professional welding process necessary	2	3363 1119 96
98	Breaker box		1	3363 1049 01
500	ContiLube® II	see separate <i>Safety and operating instructions</i>	1	3363 0671 23
550	Connecting kit for ContiLube® II	see separate chapter	1	3363 0940 58

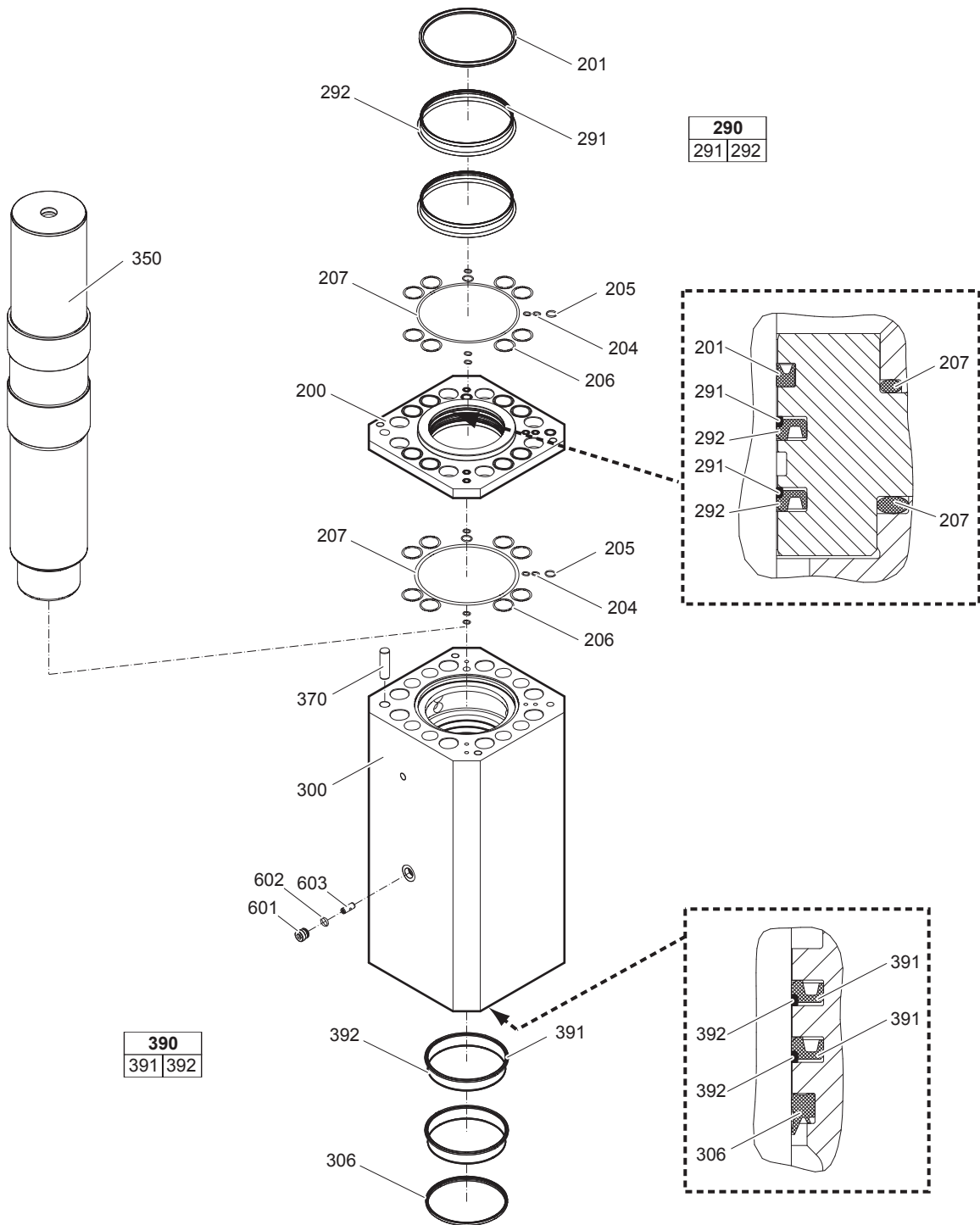
Percussion unit part 1: cylinder cover



No.	Description	Remark	Quantity	Part number
100	Cylinder cover	with no. 170 - 175	1	3363 0983 12
101	Main control valve		1	3363 1000 15
102	Cover		1	3363 1000 17
103	O-ring		1	3360 4782 91
104	Allen screw		8	3360 1037 76
105	Pair of lock washers		8	3361 8507 48
106	Frequency switching valve	AutoControl	1	3363 0354 53
107	Threaded plug		1	3363 0354 25
108	O-ring		1	3360 3143 70
109	Safety valve	PowerAdapt Only in exchange for the part to be replaced. Consult the Atlas Copco Customer Center/Dealer in your area.	1	3363 0852 70
110	Threaded plug		1	3363 0870 86
111	Plug		1	3363 0870 87
112	O-ring		1	3363 1104 01
113	Back-up ring		1	3363 0870 85
114	Connecting screw		1	3361 8546 57
115	O-ring		1	3360 4781 71
130	Non-return valve		1	3361 8545 11
138	O-ring		2	3360 3143 73
139	Allen screw		12	3362 3280 39
140(141,144,145,148-149)	Swivel joint complete		1	3363 0865 71
141(142-143)	Adapter complete		1	3363 1034 70
142	Adapter		1	-
143	Snapping		1	3363 1031 33
144	Adapter		1	3363 0865 69
145(146-147)	Seal kit		1	3361 8504 22
146	O-ring		2	-
147	Back-up ring		2	-
148	Disk		1	3361 3566 45
149	Cap		1	3363 0837 49
150(151,154,155,158-159)	Swivel joint complete		1	3363 0860 81
151(152-153)	Adapter complete		1	3363 1034 70
152	Adapter		1	-
153	Snapping		1	3363 1031 33
154	Adapter		1	3361 3566 43
155(156-157)	Seal kit		1	3361 8504 22
156	O-ring		2	-
157	Back-up ring		2	-
158	Disk		1	3361 3566 45
159	Cap		1	3361 3534 89
160	HP-accumulator		1	3363 0949 81
161	Fastening screw	each fastening screw with 3 o-rings no. 162	8	3363 1131 01
162	Service kit O-rings	12 o-rings for all 4 fastening screws no. 161	2	3363 1147 30
163	Washer		8	3363 1000 49
164	O-ring		2	3360 3143 64
165	Back-up ring		2	3360 3280 46
170	Strainer disk		2	3361 8441 13
171	Threaded plug		2	3361 8441 15
172	Threaded insert		8	3363 0949 82
173	Threaded insert		8	3361 0315 29

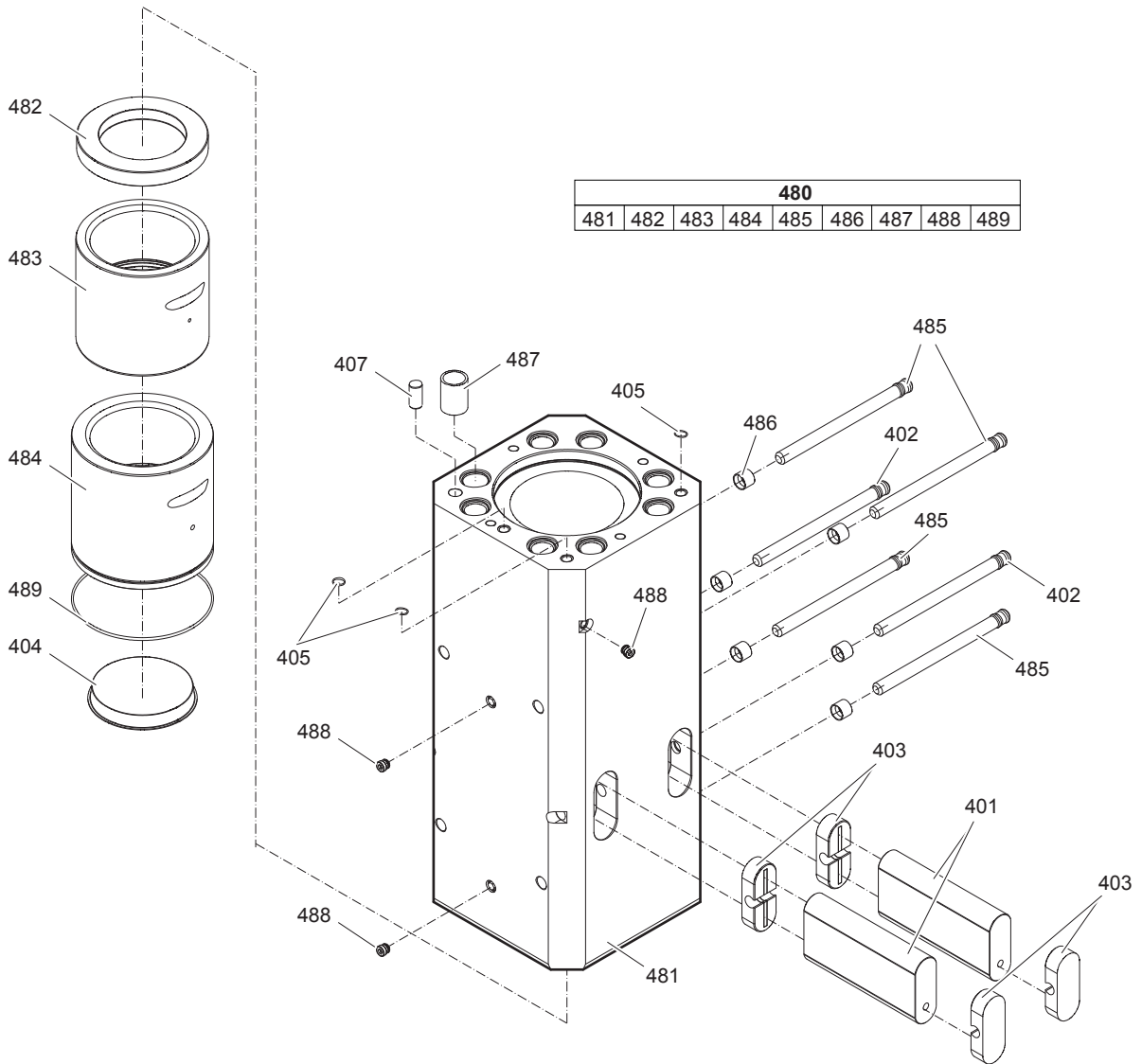
No.	Description	Remark	Quantity	Part number
174	Flange		1	3363 1047 87
175	Allen screw		6	3360 1037 50
180(181-183)	Filling valve complete		1	3363 0872 86
181	Filling valve		1	-
182	Threaded plug		1	3360 4784 26
183	O-ring		1	3360 1751 25
190(191-192)	Tensioning bolt complete		8	3363 0983 21
191	Tensioning bolt		1	3363 1000 11
192	Washer		1	3363 0936 53

Percussion unit part 2: cylinder



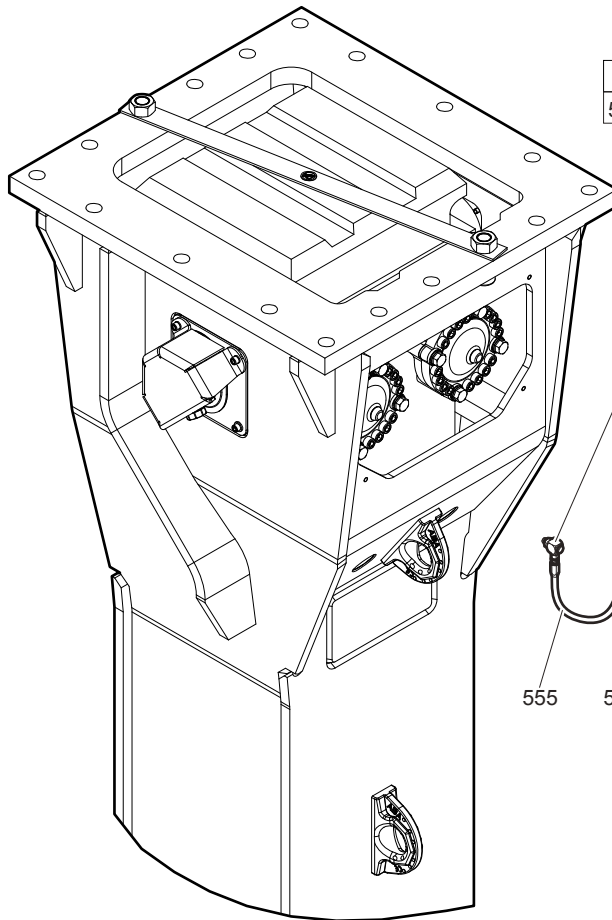
No.	Description	Remark	Quantity	Part number
200	Seal flange		1	3363 1000 13
201	Seal		1	3363 1034 20
204	O-ring		10	3360 4780 97
205	O-ring		4	3360 3143 68
206	O-ring		16	3363 0706 32
207	O-ring		2	3363 0949 78
290(291-292)	Seal kit		2	3363 0983 24
291	Back-up ring		1	-
292	Seal		1	-
300	Cylinder	with no. 601 - 603	1	3363 0983 13
306	Wiper		1	3363 0949 74
350	Percussion piston		1	3363 0983 00
370	Lock pin		1	3360 1068 19
390(391-392)	Seal kit		2	3363 0983 25
391	Back-up ring		1	-
392	Seal		1	-
601	Plug		1	3363 0825 93
602	O-ring		1	3363 0832 45
603	Valve	StartSelect	1	3363 0825 05

Percussion unit part 3: lower breaker part

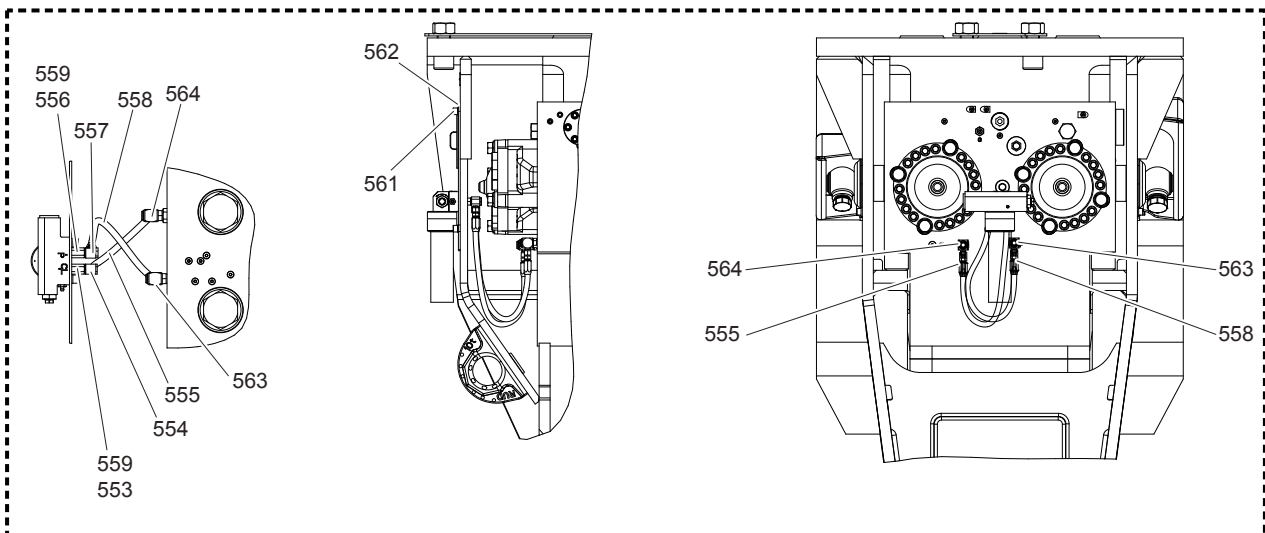
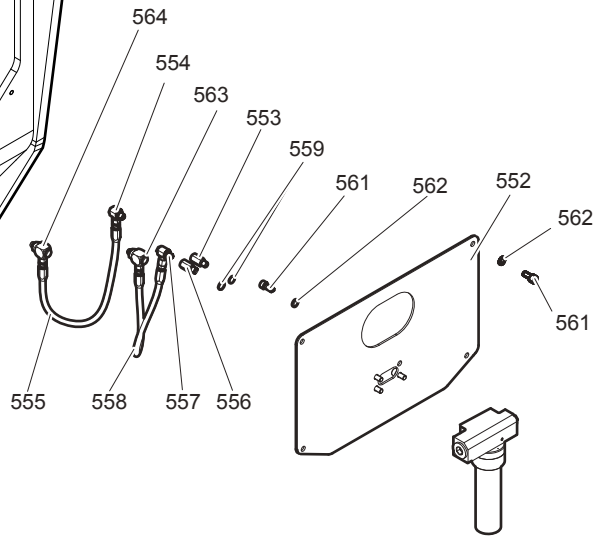


No.	Description	Remark	Quantity	Part number
401	Retainer bar		2	3363 1000 27
402	Bolt		2	3362 2604 31
403	Plug		4	3363 1000 29
404	Protective cap		1	3363 0949 77
405	O-ring		3	3360 3144 53
407	Lock pin		1	3360 1068 18
480(481-489)	Lower breaker part complete	Note: When ordering a lower breaker part for DustProtector version it is imperative to order additionally the base for wiper (no. 18) and the wiper (no. 19).	1	3363 0983 16
481	Lower breaker part		1	-
482	Buffer ring		1	3363 1000 35
483	Wear bush		1	3363 1000 37
484	Wear bush		1	3363 1000 41
485	Bolt		4	3362 2604 31
486	Locking bush		6	3362 2604 33
487	Threaded insert		8	3363 0853 21
488	Plug		4	3363 0863 01
489	O-ring		1	3363 0949 78

Connecting kit for ContiLube® II

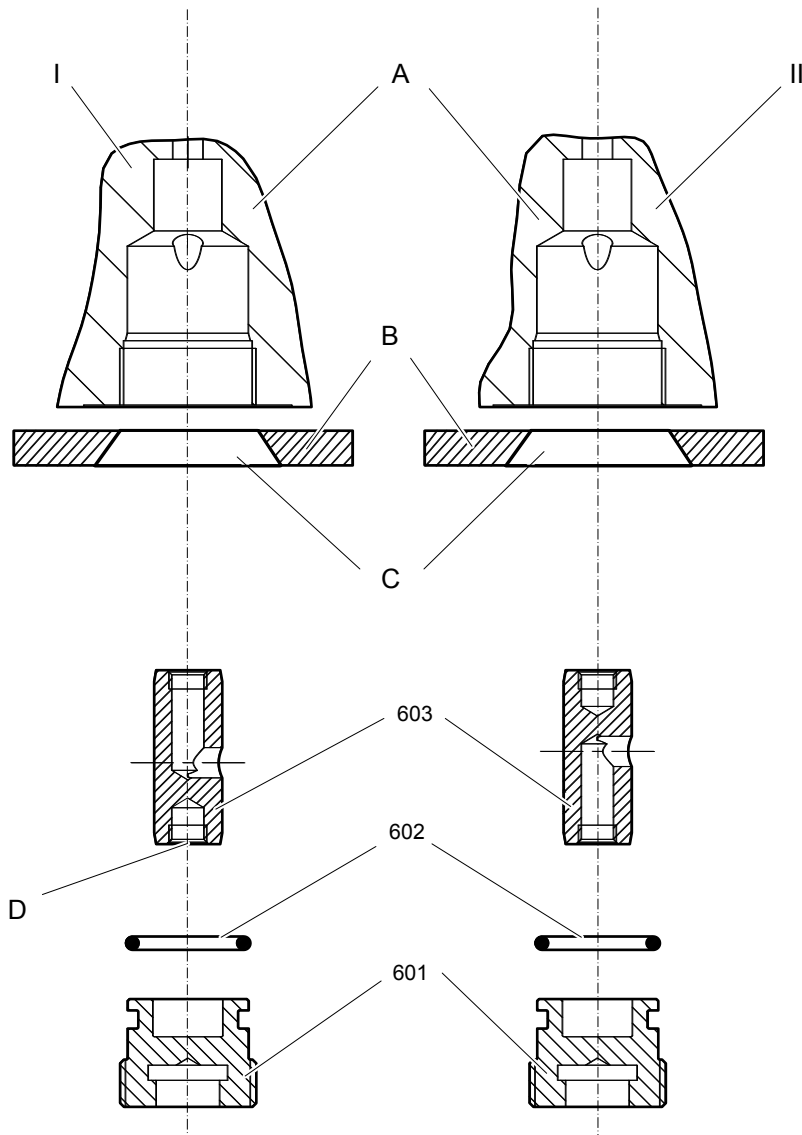


550											
552	553	554	555	556	557	558	559	561	562	563	564



No.	Description	Remark	Quantity	Part number
550(552-564)	Connecting kit		1	3363 0940 58
552	Support		1	3363 0938 59
553	Adapter	secure with Loctite 243	1	3363 0668 87
554	Fitting	secure with Loctite 243	1	3363 0662 33
555	Hydraulic hose	Grease line secure with Loctite Route the hydraulic hoses as shown on the drawing. It must be ensured that the hydraulic hoses can move freely and are not in contact at any point.	1	3363 0838 74
556	Adapter	secure with Loctite 243	1	3363 0687 45
557	Fitting	secure with Loctite 243	1	3363 0662 34
558	Hydraulic hose	Oil line secure with Loctite Route the hydraulic hoses as shown on the drawing. It must be ensured that the hydraulic hoses can move freely and are not in contact at any point.	1	3363 0838 78
559	Seal		2	3363 0669 51
561	Allen screw	secure all 4 allen screws with Loctite 243 screwed in the ContiLube® II	8	3360 1037 50
562	Pair of lock washers		8	3361 8505 96
563	Fitting	secure with Loctite 243	1	3363 0871 85
564	Support		1	3363 0871 86

StartSelect - AutoStart or AutoStop



No.	Description	Remark	Quantity	Part number
601	Plug		1	3363 0825 93
602	O-ring		1	3363 0832 45
603	Valve	StartSelect	1	3363 0825 05

I = AutoStop setting

II = AutoStart setting (standard setting on delivery)

A. Port bore in cylinder

B. Wall of breaker box

C. Plug of breaker box

D. M 10 thread (both ends) for mounting

The position of the StartSelect unit is shown on the percussion unit illustrations.

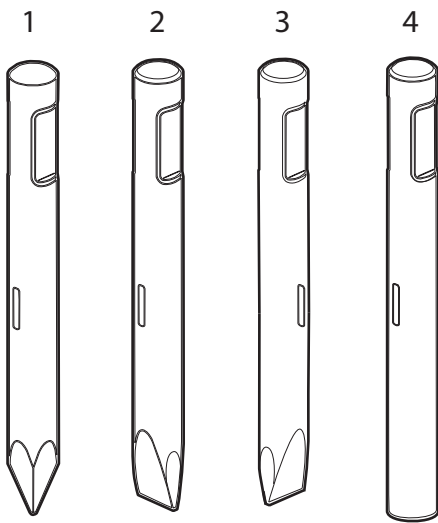
Optional parts

No.	Description	Remark	Quantity	Part number
11	Floating ring	steel	1	3363 1007 15
484	Wear bush	bronze	1	3363 1000 39

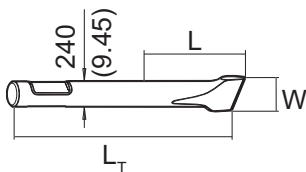
Tightening torques

No.	Description	Tightening torque	Remark
36	Allen screw	85 Nm	Allen key size 10
44	Allen screw	85 Nm	Allen key size 10
104	Allen screw	380 Nm	Allen key size 17
107	Threaded plug	300 Nm	Allen key size 22
110	Threaded plug	300 Nm	Socket spanner size 24
130	Non-return valve	200 Nm	Socket spanner size 41
139	Allen screw	80 Nm	Allen key size 10
161	Fastening screw		Socket spanner size 30 Tightening regulations: 1. Treat the threads and threaded inserts for the fastening screws with an Anti-Seize agent. 2. Treat the surfaces between the screw head, washer, and HP-accumulator cover with Anti-Seize. 3. Place on the HP-accumulator, and tighten the fastening screws by hand in a crosswise fashion. 4. Pretighten the fastening screws to 120 Nm, proceeding in a crosswise fashion, 5. then tighten each screw through 30° in a crosswise fashion, 6. finally tighten each screw again through 60° in a crosswise fashion.
175	Allen screw	80 Nm	Allen key size 10
181	Filling valve	130 Nm	Socket spanner size 22
182	Threaded plug	20 Nm	Allen key size 5
191	Tensioning bolt		Torque wrench or Power wrench size 75 1. Pretighten the tensioning bolts to 500 Nm, proceeding in a crosswise fashion, 2. then tighten each tensioning bolt through 120° (2 sides of hexagonal head) in a crosswise fashion, 3. then tighten each tensioning bolt through 120° (2 sides of hexagonal head) in a crosswise fashion, 4. finally tighten each tensioning bolt again through 150° (2 1/2 sides of hexagonal head) in a crosswise fashion.
601	Plug	200 Nm	Allen key size 17

Working tools



HB 10000 DustProtector



Metric

No.	Description	Remark	W (mm)	L (mm)	L _T (mm)	Wt (kg)	Part number
1	Mallet point	SilverLine		880	1900	580.0	3363 0981 07
2	Chisel (cross)	SilverLine	240	880	1900	606.0	3363 0981 05
3	Chisel (parallel)	SilverLine	240	880	1900	606.0	3363 0981 06
4	Blunt tool	SilverLine		880	1900	651.0	3363 0990 51

Imperial

No.	Description	Remark	W (in.)	L (in.)	L _T (in.)	Wt (lb)	Part number
1	Mallet point	SilverLine		34.65	74.80	1278.7	3363 0981 07
2	Chisel (cross)	SilverLine	9.45	34.65	74.80	1336.0	3363 0981 05
3	Chisel (parallel)	SilverLine	9.45	34.65	74.80	1336.0	3363 0981 06
4	Blunt tool	SilverLine		34.65	74.80	1435.2	3363 0990 51

Accessories

Hydraulic hoses

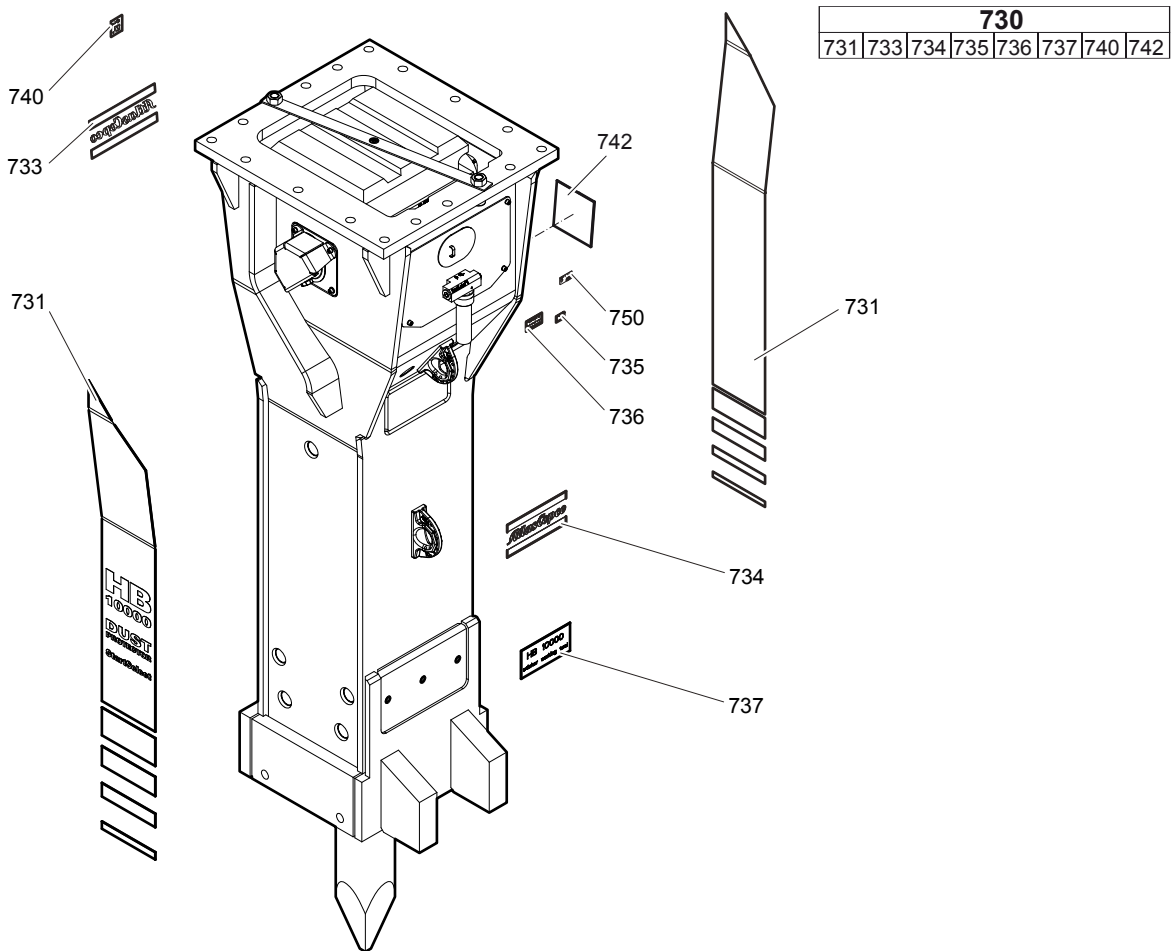
Description	Remark	Quantity	Part number
Hose	Feed line I.D. 32 (1 1/4"), both ends JIC 1 5/8", length 2800 mm (110 in.)	1	3361 8538 60
Hose	Return line I.D. 40 (1 1/2"), both ends JIC 1 7/8", length 2800 mm (110 in.)	1	3363 0835 63
Hose	Feed line I.D. 32 (1 1/4"), both ends JIC 1 5/8", length 3500 mm (138 in.)	1	3361 8538 61
Hose	Return line I.D. 40 (1 1/2"), both ends JIC 1 7/8", length 3500 mm (138 in.)	1	3363 0835 62

Optional equipment

Description	Remark	Quantity	Part number
Chisel paste for ContiLube® II	12 x 500 g (1.1 lbs)	1	3363 0912 00
Grease gun for cartridge ContiLube® II		1	3363 0345 67
Grease nipple		1	3360 4337 74
Service box no. II with nitrogen cylinder	5 l 1.1 gal (1.32 US gal)	1	3363 0898 45
Service box no. III without nitrogen cylinder		1	3363 0949 40
Test gauge lower wear bush		1	3363 1004 67
Inside calliper upper wear bush		1	3363 0949 52
Adapter plate matching the carrier Consult the Atlas Copco Customer Center/Dealer in your area.		1	-
Base plate with threaded inserts		1	3363 1046 09
Bolt kit		1	3363 1030 61
Base plate with through borings		1	3363 1028 75
Bolt kit		1	3363 0945 78
Allen key	27 mm for bolt kit	1	3360 1038 02
Adapter kit for underwater applications		1	3363 1030 77
Vertebral block (hoisting device)		2	3363 0944 00
Piston retainer		1	3363 1000 51

Kits

Label kit HB 10000 DustProtector



No.	Description	Remark	Quantity	Part number
730(731-742)	Label kit HB 10000 DP		1	3363 0983 27
731	Product label	"HB 10000 DP"	2	-
733	Product label	"Atlas Copco"	1	-
734	Product label	"Atlas Copco"	2	-
735	Lubricating symbol		1	-
736	Label gas pressure		2	-
737	Label working tools		1	-
740	Sound power label		1	-
742	Label AEM		1	-
750	Name plate	Consult the Atlas Copco Customer Center/Dealer in your area.	1	-

Seal kit

No.	Description	Remark	Quantity	Part number
	Seal kit		1	3363 0983 22
103	O-ring		1	3360 4782 91
108	O-ring		1	3360 3143 70
112	O-ring		1	3363 1104 01
113	Back-up ring		1	3363 0870 85
115	O-ring		1	3360 4781 71
138	O-ring		2	3360 3143 73
145(146-147)	Seal kit		1	3361 8504 22
146	O-ring		2	3361 8462 82
147	Back-up ring		2	3361 8462 81
155(156-157)	Seal kit		1	3361 8504 22
156	O-ring		2	3361 8462 82
157	Back-up ring		2	3361 8462 81
164	O-ring		2	3360 3143 64
165	Back-up ring		2	3360 3280 46
182	Threaded plug		1	3360 4784 26
183	O-ring		1	3360 1751 25
201	Seal		1	3363 1034 20
204	O-ring		10	3360 4780 97
205	O-ring		4	3360 3143 68
206	O-ring		16	3363 0706 32
207	O-ring		2	3363 0949 78
290(291-292)	Seal kit		2	3363 0983 24
291	Back-up ring		1	3363 1000 21
292	O-ring		1	3360 4780 97
306	Wiper		1	3363 0949 74
390(391-392)	Seal kit		2	3363 0983 25
391	Seal		1	3363 1000 23
392	Back-up ring		1	3363 1000 25
405	O-ring		3	3360 3144 53
489	O-ring		1	3363 0949 78
602	O-ring		1	3363 0832 45

Seal kit for swivel joint (ContiLube® II)

No.	Description	Remark	Quantity	Part number
	Seal kit		1	3363 0917 32

Plastic parts kit

No.	Description	Remark	Quantity	Part number
	Plastic parts kit		1	3363 0948 23
2	Elastic pad		1	3363 0929 57
3	Shock absorber		2	3363 0938 53
4	Guide plate		4	3363 0938 55
5	Guide plate		2	3362 2626 67
6	Guide plate		2	3362 2626 65
7	Guide plate		1	3363 1007 13
8	Plate		2	3363 1007 77

Tensioning bolt kit

No.	Description	Remark	Quantity	Part number
	Tensioning bolt kit		1	3363 0983 29
191	Tensioning bolt		4	3363 1000 11
192	Washer		4	3363 0936 53
487	Threaded insert		4	3363 0853 21
	Anti-Seize 120 g		1	3363 0943 00

DustProtector kit

No.	Description	Remark	Quantity	Part number
	DustProtector kit		1	3363 0983 30
11	Floating ring		1	3363 1007 01
12	Counter ring		1	3363 1007 03
13	Guide ring		1	3363 1007 05
14	Bolt		2	3363 1007 07
15	Locking bush		2	3361 8543 63

Noise protection kit

No.	Description	Remark	Quantity	Part number
	Noise protection kit		1	3363 0983 28
31	Cover		2	3363 0311 81
32	Plug		15	3363 0860 17
40	Cover		1	3363 0926 97

Lower breaker part kit DustProtector (bronze)

No.	Description	Remark	Quantity	Part number
	Lower breaker part kit	HB 10000 DustProtector with lower wear bush bronze	1	3363 1034 15
18	Base for wiper		1	3363 1007 09
19	Wiper		1	3363 1007 11
401	Retainer bar		2	3363 1000 27
402	Bolt		2	3362 2604 31
403	Plug		4	3363 1000 29
482	Buffer ring		1	3363 1000 35
483	Wear bush		1	3363 1000 37
484	Wear bush	bronze	1	3363 1000 39
485	Bolt		4	3362 2604 31
486	Locking bush		6	3362 2604 33
489	O-ring		1	3363 0949 78
	Chisel paste		1	3315 0381 00
	Test gauge		1	3363 1004 67

Lower breaker part kit DustProtector (steel)

No.	Description	Remark	Quantity	Part number
	Lower breaker part kit	HB 10000 DustProtector with lower wear bush steel	1	3363 0983 32
18	Base for wiper		1	3363 1007 09
19	Wiper		1	3363 1007 11
401	Retainer bar		2	3363 1000 27
402	Bolt		2	3362 2604 31
403	Plug		4	3363 1000 29
482	Buffer ring		1	3363 1000 35
483	Wear bush		1	3363 1000 37
484	Wear bush	steel	1	3363 1000 41
485	Bolt		4	3362 2604 31
486	Locking bush		6	3362 2604 33
489	O-ring		1	3363 0949 78
	Chisel paste		1	3315 0381 00
	Test gauge		1	3363 1004 67

Fastening screw kit

No.	Description	Remark	Quantity	Part number
	Fastening screw kit		1	3363 0983 38
161	Fastening screw		4	3363 1131 01
162	Washer		4	3363 1000 49
172	Threaded insert		4	3363 0949 82

Accumulator repair kit

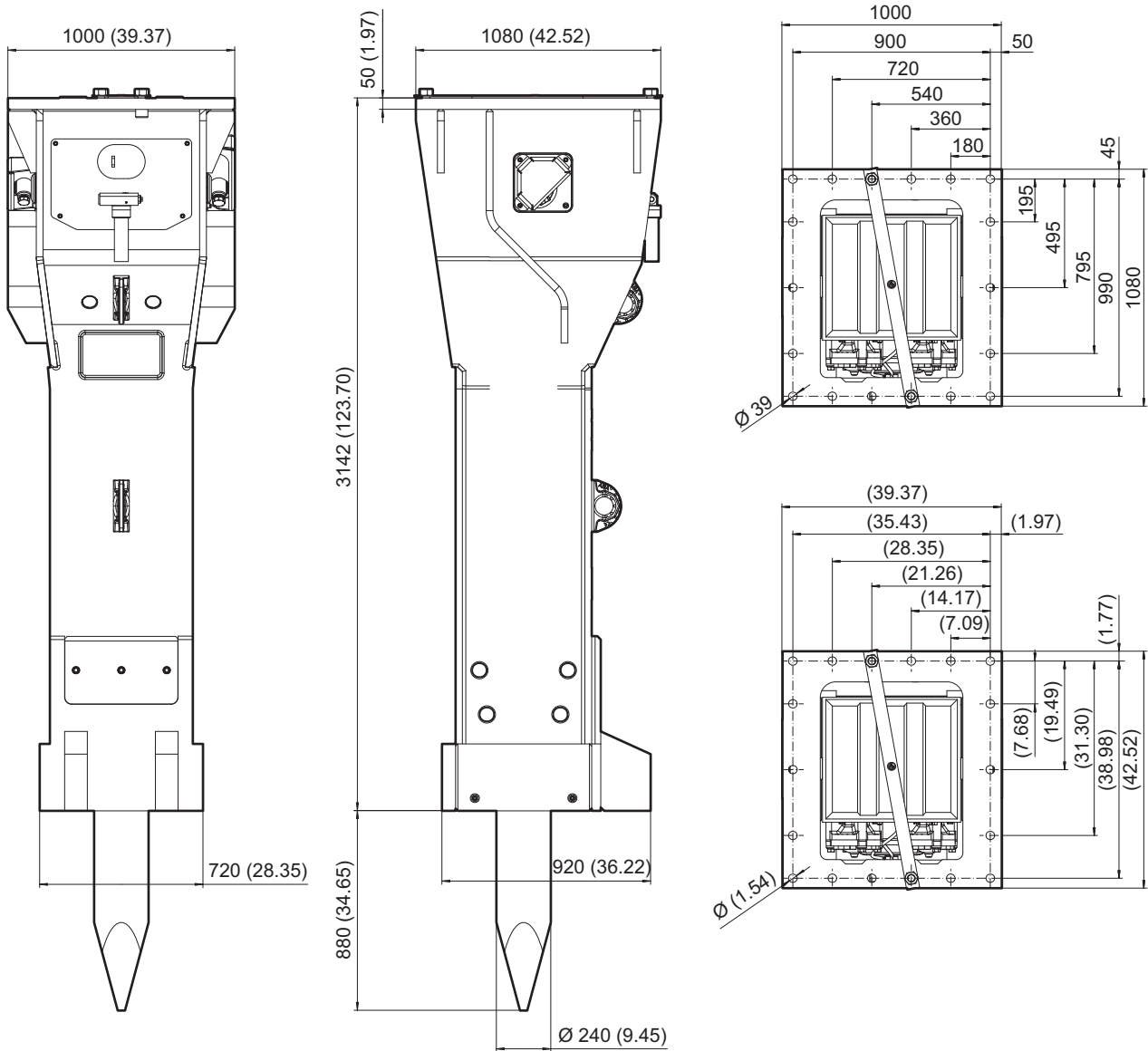
Accumulators are pressure containers in the context of the European Pressure Equipment Directive 97/23/EC. You have to observe all safety instructions comply with the laws and all national/regional regulations of your country if you repair accumulators.

No.	Description	Remark	Quantity	Part number
	Accumulator repair kit		1	3363 0898 50
	Diaphragm		1	3361 3290 22
	Filling screw		1	3360 3322 59
	O-ring		1	3360 3144 60
	Protective cap		1	3361 3350 25
	O-ring		1	3360 3143 64
	Back-up ring		1	3360 3280 46

Dimensions

Dimensions HB 10000 DustProtector

mm (inch)





Any unauthorized use or copying of the contents or any part thereof is prohibited.
This applies in particular to trademarks, model denominations, part numbers, and drawings.

© 2013 Atlas Copco Construction Tools GmbH | No. 3390 7266 01 | 2013-02-20

www.atlascopco.com