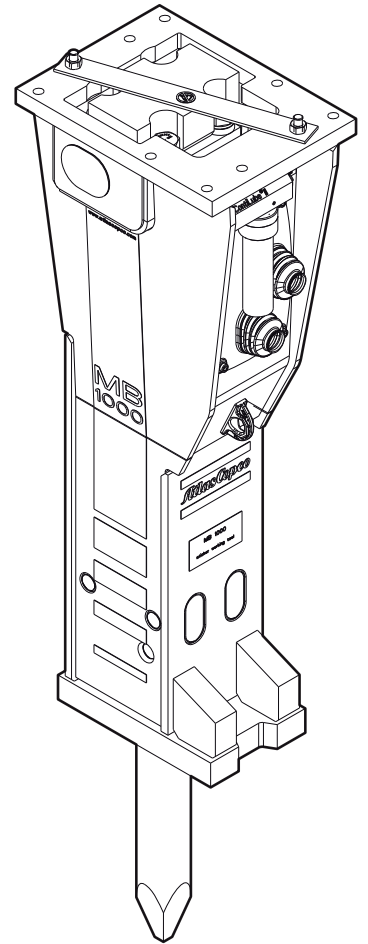


Spare parts list Hydraulic breakers

	Valid from serial number
MB 1000	100
MB 1000 DP	100



Contents

General information.....	5
Spare parts list.....	6
Hydraulic breaker MB 1000.....	6
Hydraulic breaker MB 1000 DustProtector.....	8
Percussion unit part 1: cylinder cover.....	10
Percussion unit part 2: cylinder.....	12
Percussion unit part 3: lower breaker part.....	14
Connecting kit for ContiLube® II.....	16
Optional parts.....	18
Tightening torques.....	19
Working tools.....	20
MB 1000.....	20
MB 1000 DustProtector.....	21
Accessories.....	22
Hydraulic hoses.....	22
Optional equipment.....	22
Kits.....	23
Label kit MB 1000.....	23
Label kit MB 1000 DustProtector.....	24
Seal kit.....	25
Plastic parts kit.....	25
Tensioning bolt kit.....	25
DustProtector kit.....	26
Noise protection kit.....	26
Lower breaker part kit.....	26
Lower breaker part kit DustProtector.....	27
Dimensions.....	28
Dimensions MB 1000.....	28
Dimensions MB 1000 DustProtector.....	29

General information

This spare parts list applies to the following:

Part number	Description
3363 0887 85	Hydraulic breaker MB 1000
3363 0887 87	Hydraulic breaker MB 1000 DustProtector

Use only authorized parts. Any damage or malfunction caused by the use of unauthorized parts is not covered by Warranty or Product Liability. Any unauthorized use or copying of the contents or any part thereof is prohibited. This applies in particular to trademarks, model denominations, part numbers, and drawings.

Instructions for use

This spare parts list contains no safety regulations and is merely intended to assist in the ordering of spare parts.

For information on operating, servicing, or repairing, the relevant Safety and operating instructions must be consulted at all costs.

Please observe the safety instructions listed in the relevant Safety and operating instructions!

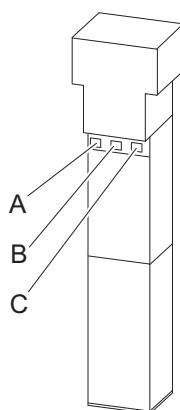
Instructions of ordering

It is essential to indicate the serial number of the hydraulic attachment when ordering spare parts!

Please note the full identification number of your hydraulic attachment. This code can be found on the cylinder.

Determine the quantity of individual parts which are required and need to be ordered. The order must indicate the following details:

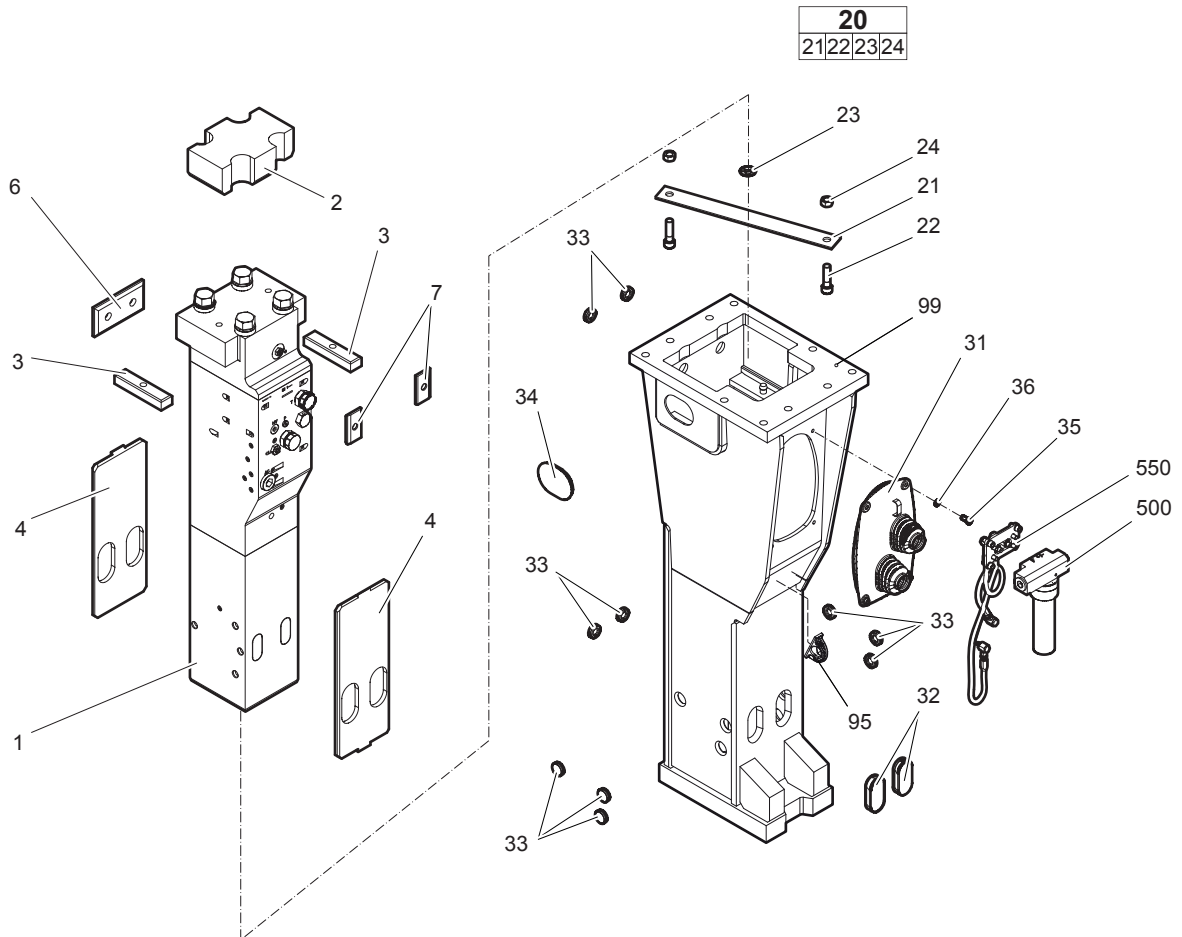
- full identification code of the hydraulic attachment
- required quantity
- part number
- description



- A. Cylinder number
- B. Type
- C. Serial number

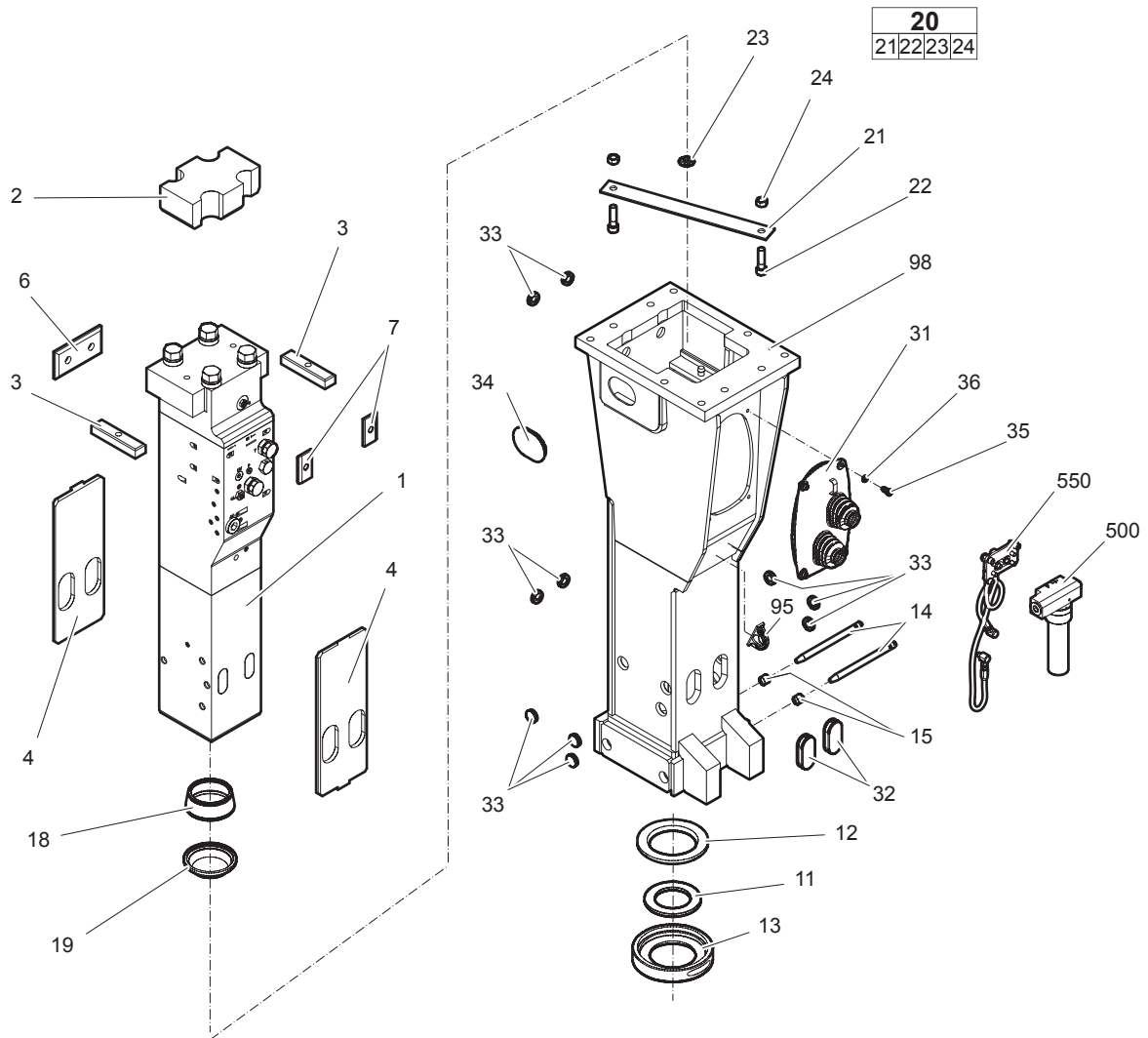
Spare parts list

Hydraulic breaker MB 1000



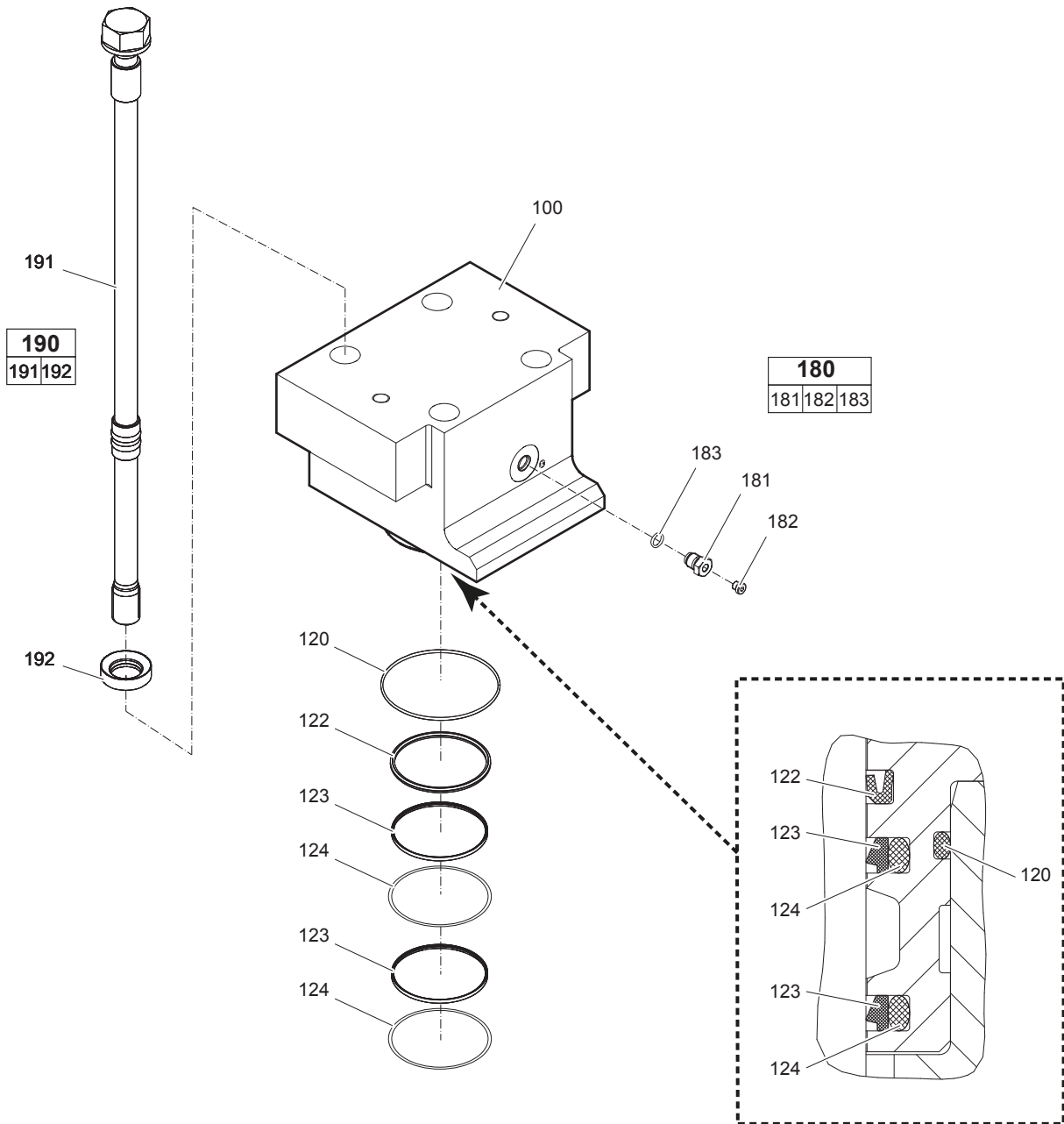
No.	Description	Remark	Quantity	Part number
1	Percussion unit	see separate chapter	1	-
2	Elastic pad		1	3363 0828 99
3	Shock absorber		2	3361 8522 37
4	Guide plate		2	3363 0844 33
6	Guide plate		1	3363 0842 31
7	Guide plate		2	3363 0828 97
20(21-24)	Transport safety device complete		1	3363 0837 31
21	Transport safety device		1	-
22	Allen screw		2	3360 0267 86
23	Label transport safety device		1	3363 0918 72
24	Nut		2	3360 1032 51
31	Cover		1	3363 0860 19
32	Plug		2	3363 0860 11
33	Plug		10	3362 2678 97
34	Plate		1	3362 2679 98
35	Allen screw		4	3360 1007 91
36	Pair of lock washers		4	3361 8505 96
95	Lifting eye	professional welding process necessary	1	3363 1119 93
99	Breaker box		1	3363 0988 02
500	ContiLube® II	see separate <i>Safety and operating instructions</i>	1	3363 0671 23
550	Connection kit for ContiLube® II	see separate chapter	1	3363 0879 18

Hydraulic breaker MB 1000 DustProtector



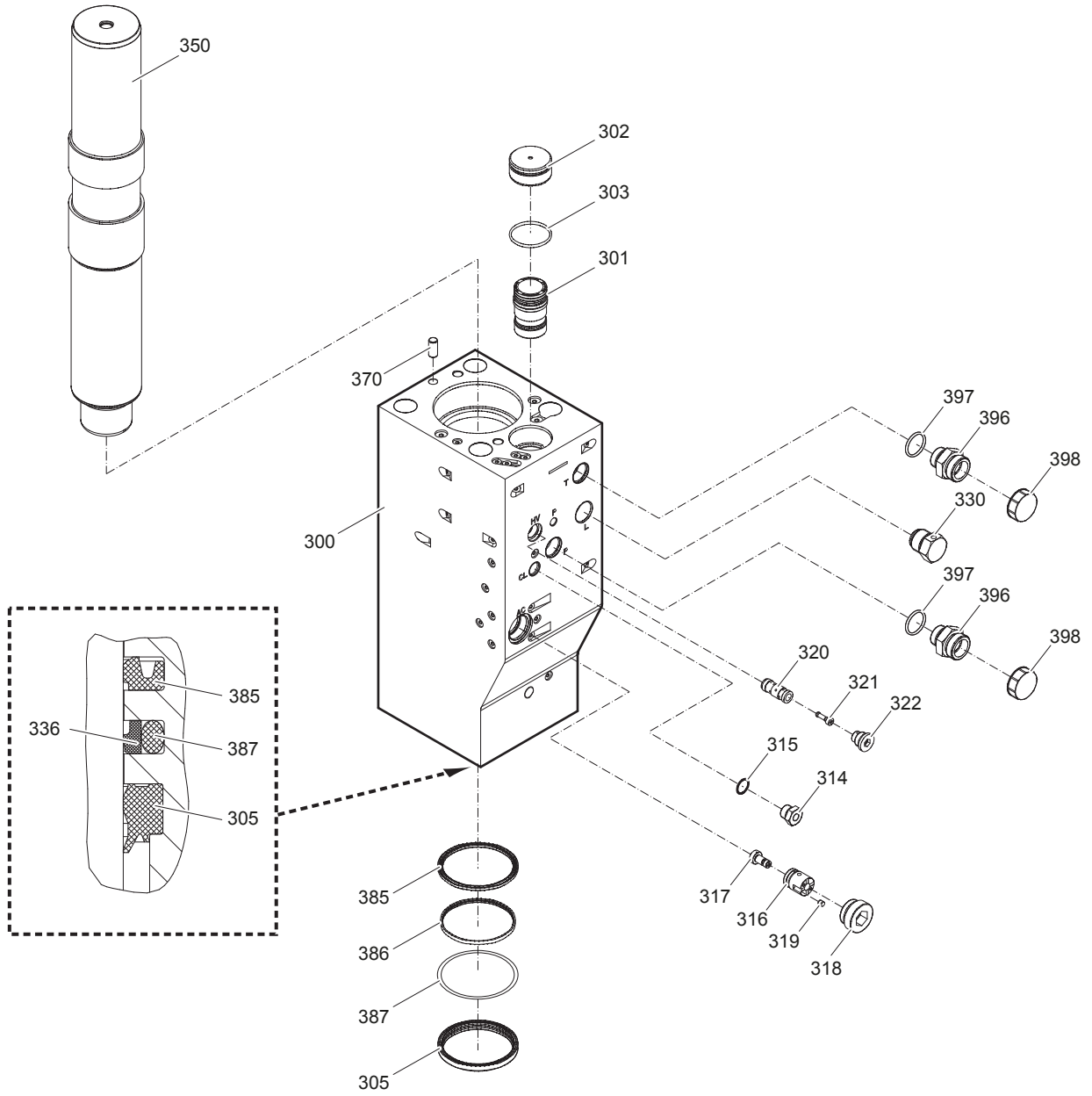
No.	Description	Remark	Quantity	Part number
1	Percussion unit	see separate chapter Note: When ordering a percussion unit for DustProtector version it is imperative to order additionally the base for wiper (no. 18) and the wiper (no. 19).	1	-
2	Elastic pad		1	3363 0828 99
3	Shock absorber		2	3361 8522 37
4	Guide plate		2	3363 0844 33
6	Guide plate		1	3363 0842 31
7	Guide plate		2	3363 0828 97
11	Floating ring	tribolid steel see chapter <i>Optional parts</i>	1	3363 0853 28
12	Counter ring		1	3363 0828 77
13	Guide ring		1	3363 0828 79
14	Bolt		2	3363 0853 26
15	Locking bush		2	3361 8543 63
18	Base for wiper		1	3363 0905 05
19	Wiper		1	3363 0853 27
20(21-24)	Transport safety device complete		1	3363 0837 31
21	Transport safety device		1	-
22	Allen screw		2	3360 0267 86
23	Label transport safety device		1	3363 0918 72
24	Nut		2	3360 1032 51
31	Cover		1	3363 0860 19
32	Plug		2	3363 0860 11
33	Plug		10	3362 2678 97
34	Plate		1	3362 2679 98
35	Allen screw		4	3360 1007 91
36	Pair of lock washers		4	3361 8505 96
95	Lifting eye	professional welding process necessary	1	3363 1119 93
98	Breaker box		1	3363 0988 03
500	ContiLube® II	see separate <i>Safety and operating instructions</i>	1	3363 0671 23
550	Connection kit for ContiLube® II	see separate chapter	1	3363 0879 18

Percussion unit part 1: cylinder cover



No.	Description	Remark	Quantity	Part number
100	Cylinder cover		1	3363 0894 16
120	O-ring		1	3360 3143 76
122	Seal		1	3363 0852 76
123	Seal		2	3363 0852 38
124	O-ring		2	3360 3280 53
180(181-183)	Filling valve complete		1	3363 0872 86
181	Filling valve		1	-
182	Threaded plug		1	3360 4784 26
183	O-ring		1	3360 1751 25
190(191-192)	Tensioning bolt complete		4	3363 0895 68
191	Tensioning bolt		1	3363 0901 15
192	Washer		1	3363 0936 45

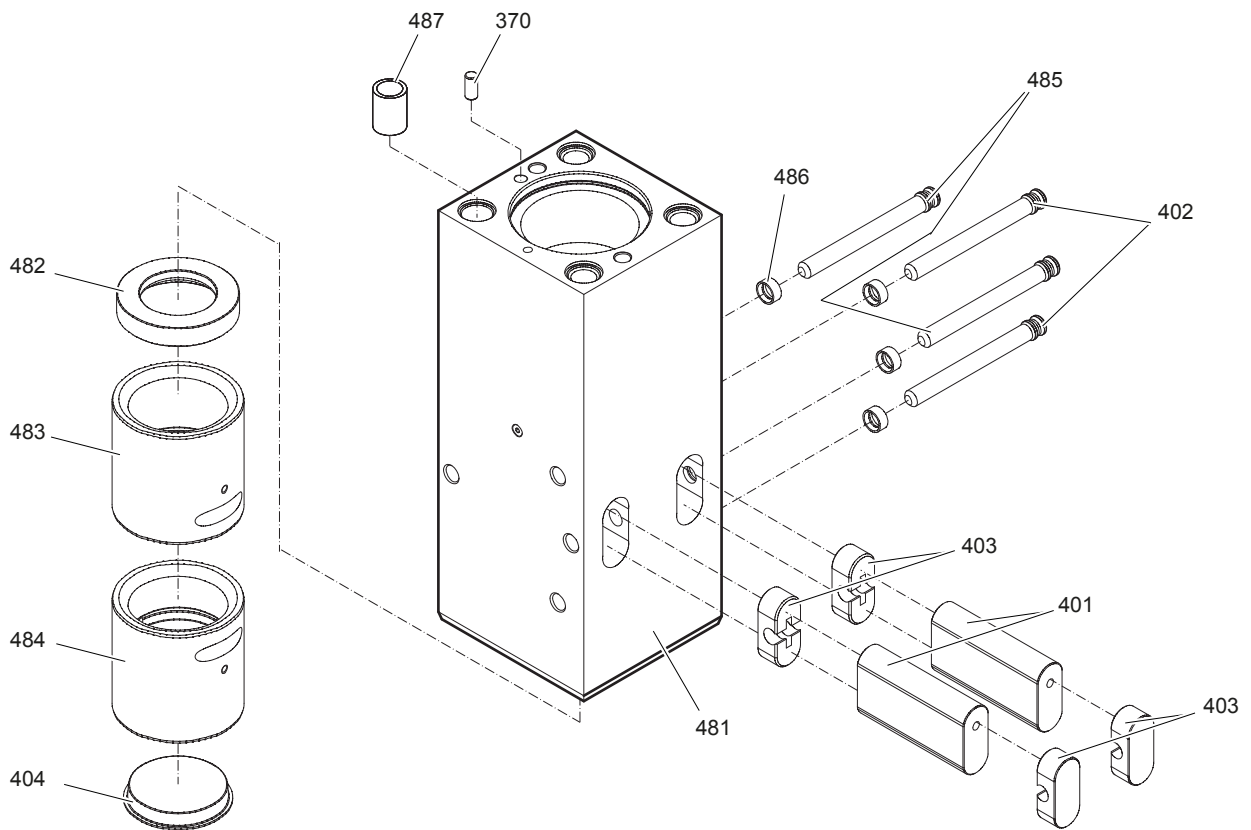
Percussion unit part 2: cylinder



No.	Description	Remark	Quantity	Part number
300	Cylinder		1	3363 0894 11
301	Main control valve		1	3363 0337 51
302	Cover		1	3363 0333 33
303	O-ring		1	3363 0342 50
305	Wiper		1	3363 0852 42
314	Connecting screw		1	3361 8546 57
315	O-ring		1	3360 4781 71
316	Valve bushing	AutoControl	1	3363 0678 03
317	Valve piston	AutoControl	1	3363 0678 05
318	Threaded plug		1	3363 0695 01
319	Pin	AutoControl	1	3363 0661 97
320	Valve bushing	AutoControl	1	3363 0330 59
321	Valve piston	AutoControl	1	3363 1053 05
322	Threaded plug		1	3363 0337 49
330	Non-return valve		1	3361 8545 11
350	Percussion piston		1	3363 0894 15
370	Lock pin		1	3360 1067 84
385	Seal		1	3363 0852 39
386	Seal		1	3360 9209 30
387	O-ring		1	3360 9209 32
396	Fitting	with no. 397	2	3360 9956 65
397	O-ring		2	3360 3145 51
398	Protective cap		2	3361 3534 88

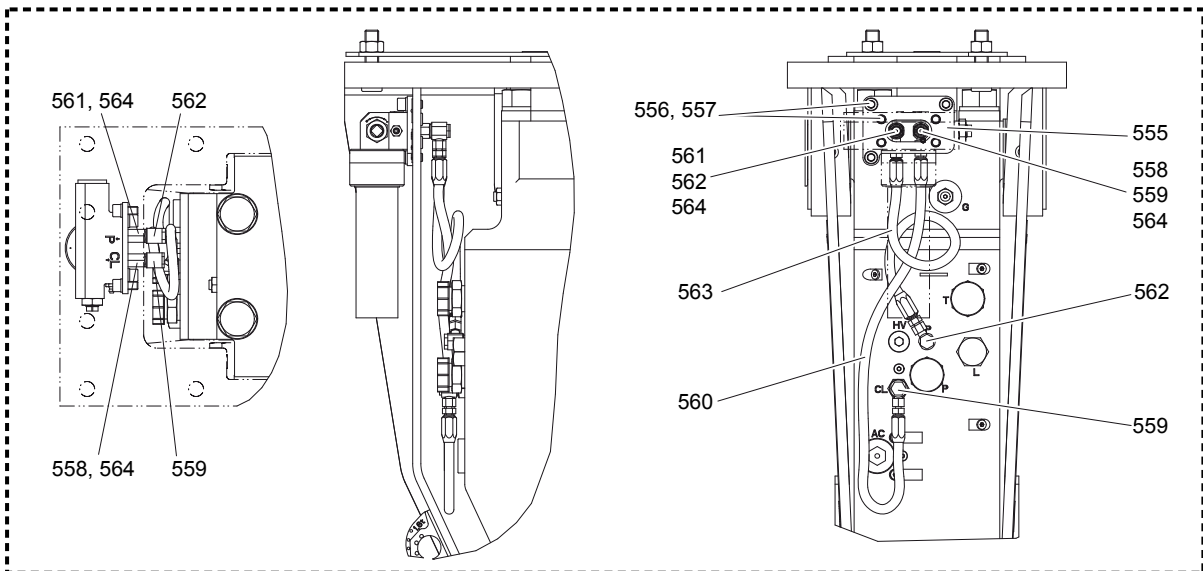
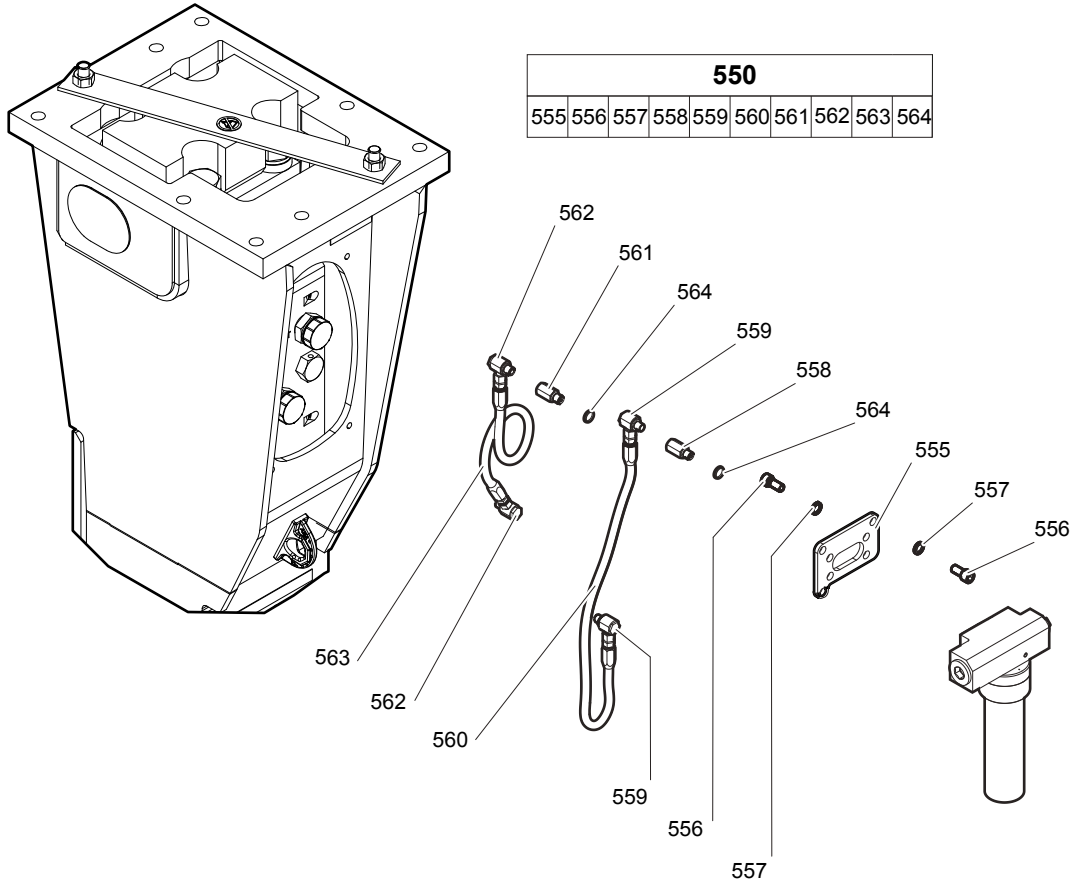
Percussion unit part 3: lower breaker part

480						
481	482	483	484	485	486	487



No.	Description	Remark	Quantity	Part number
370	Lock pin		1	3360 1067 84
401	Retainer bar		2	3363 0840 75
402	Bolt		2	3363 0851 10
403	Plug		4	3362 2629 25
404	Protective cap		1	3363 0317 14
480(481-487)	Lower breaker part complete	Note: When ordering a lower breaker part for DustProtector version it is imperative to order additionally the base for wiper (no. 18) and the wiper (no. 19).	1	3363 0894 02
481	Lower breaker part		1	-
482	Impact ring		1	3363 0840 77
483	Wear bush		1	3363 0840 71
484	Wear bush	steel bronze see chapter <i>Optional parts</i>	1	3363 0905 03
485	Bolt		2	3363 0851 10
486	Locking bush		4	3363 0330 43
487	Threaded insert		4	3363 0894 19

Connecting kit for ContiLube® II



No.	Description	Remark	Quantity	Part number
550(555-564)	Connecting kit		1	3363 0879 18
555	Support		1	3363 0988 15
556	Allen screw	secure all 4 allen screws with Loctite 243 screwed in the ContiLube® II	7	3360 1037 50
557	Pair of lock washers		7	3361 8505 96
558	Fitting	secure with Loctite 243	1	3363 0668 87
559	Fitting	secure with Loctite 243	2	3363 0662 33
560	Hydraulic hose	Oil line secure with Loctite 243 Route the hydraulic hoses as shown on the drawing. It must be ensured that the hydraulic hoses can move freely and are not in contact at any point.	1	3363 0873 93
561	Fitting	secure with Loctite 243	1	3363 0687 45
562	Fitting	secure with Loctite 243	2	3363 0662 34
563	Hydraulic hose	Grease line secure with Loctite 243 Route the hydraulic hoses as shown on the drawing. It must be ensured that the hydraulic hoses can move freely and are not in contact at any point.	1	3363 0838 79
564	Seal		2	3363 0669 51

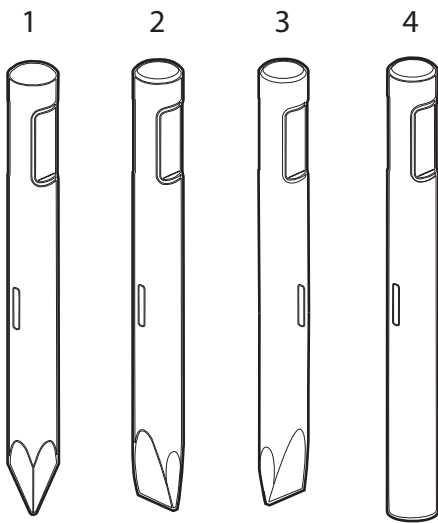
Optional parts

No.	Description	Remark	Quantity	Part number
11	Floating ring	steel	1	3363 0922 05
484	Wear bush	bronze	1	3363 0905 01

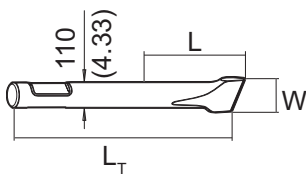
Tightening torques

No.	Description	Tightening torque	Remark
22	Allen screw	240 Nm	Allen key size 17
24	Nut	240 Nm	Socket spanner size 30
35	Allen screw	10 Nm	Allen key size 10
181	Filling valve	130 Nm	Socket spanner size 22
182	Threaded plug	20 Nm	Allen key size 5
191	Tensioning bolt		Torque wrench or Power wrench size 50 1. Pretighten the tensioning bolts to 200 Nm, proceeding in a crosswise fashion, 2. then tighten each tensioning bolt through 120° (2 sides of hexagonal head) in a crosswise fashion, 3. finally tighten each tensioning bolt again through 120° (2 sides of hexagonal head) in a crosswise fashion.
314	Threaded plug	300 Nm	Allen key size 22
318	Threaded plug	350 Nm	Allen key size 24
322	Threaded plug	100 Nm	Allen key size 12
330	Non-return valve	200 Nm	Socket spanner size 41
396	Fitting	330 Nm	Jaw spanner size 46/50
556	Allen screw	85 Nm	Allen key size 10
558	Fitting	45 Nm	Open-ended wrench size 19
559	Fitting	45 Nm	Open-ended wrench size 19, 22, 17
560	Hydraulic hose oil line	16 Nm	Open-ended wrench size 17
561	Fitting	55 Nm	Open-ended wrench size 19
562	Fitting	55 Nm	Open-ended wrench size 19, 22
563	Hydraulic hose grease line	42 Nm	Open-ended wrench size 19

Working tools



MB 1000



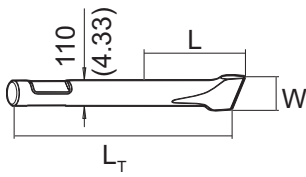
Metric

No.	Description	Remark	W (mm)	L (mm)	L _T (mm)	Wt (kg)	Part number
1	Moil point	ClassicLine		570	1100	70.0	3363 0848 77
1	Moil point	SilverLine		570	1100	74.0	3363 0840 79
2	Chisel (cross)	ClassicLine	110	570	1100	72.0	3363 0848 87
2	Chisel (cross)	SilverLine	110	570	1100	76.0	3363 0840 83
3	Chisel (parallel)	ClassicLine	110	570	1100	72.0	3363 0942 51
4	Blunt tool	ClassicLine		570	1100	72.0	3363 0901 13
4	Blunt tool	SilverLine		570	1100	79.0	3363 0840 81

Imperial

No.	Description	Remark	W (in.)	L (in.)	L _T (in.)	Wt (lb)	Part number
1	Moil point	ClassicLine		22.44	43.31	154.3	3363 0848 77
1	Moil point	SilverLine		22.44	43.31	163.1	3363 0840 79
2	Chisel (cross)	ClassicLine	4.33	22.44	43.31	158.7	3363 0848 87
2	Chisel (cross)	SilverLine	4.33	22.44	43.31	167.5	3363 0840 83
3	Chisel (parallel)	ClassicLine	4.33	22.44	43.31	158.7	3363 0942 51
4	Blunt tool	ClassicLine		22.44	43.31	158.7	3363 0901 13
4	Blunt tool	SilverLine		22.44	43.31	174.2	3363 0840 81

MB 1000 DustProtector



Metric

No.	Description	Remark	W (mm)	L (mm)	L _T (mm)	Wt (kg)	Part number
1	Moil point	ClassicLine		540	1100	70.0	3363 0848 77
1	Moil point	SilverLine		540	1100	74.0	3363 0840 79
2	Chisel (cross)	ClassicLine	110	540	1100	72.0	3363 0848 87
2	Chisel (cross)	SilverLine	110	540	1100	76.0	3363 0840 83
3	Chisel (parallel)	ClassicLine	110	540	1100	72.0	3363 0942 51
4	Blunt tool	ClassicLine		540	1100	72.0	3363 0901 13
4	Blunt tool	SilverLine		540	1100	79.0	3363 0840 81

Imperial

No.	Description	Remark	W (in.)	L (in.)	L _T (in.)	Wt (lb)	Part number
1	Moil point	ClassicLine		21.26	43.31	154.3	3363 0848 77
1	Moil point	SilverLine		21.26	43.31	163.1	3363 0840 79
2	Chisel (cross)	ClassicLine	4.33	21.26	43.31	158.7	3363 0848 87
2	Chisel (cross)	SilverLine	4.33	21.26	43.31	167.5	3363 0840 83
3	Chisel (parallel)	ClassicLine	4.33	21.26	43.31	158.7	3363 0942 51
4	Blunt tool	ClassicLine		21.26	43.31	158.7	3363 0901 13
4	Blunt tool	SilverLine		21.26	43.31	174.2	3363 0840 81

Accessories

Hydraulic hoses

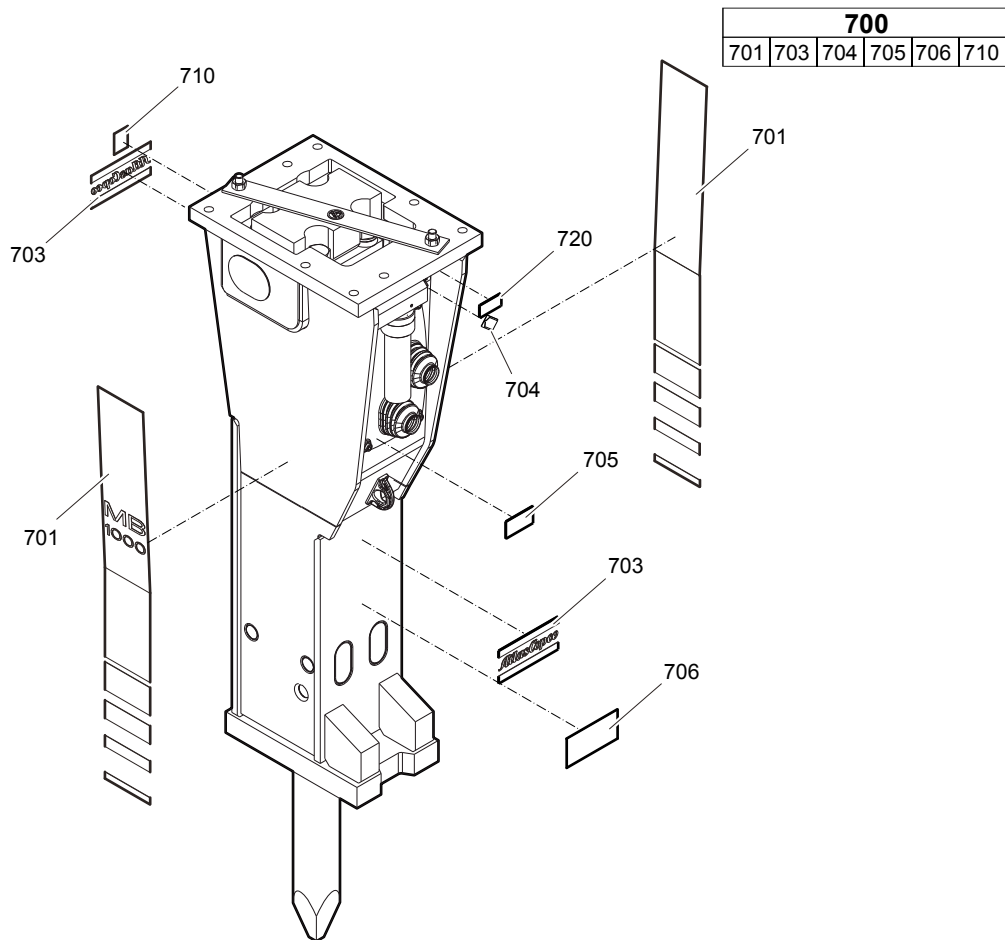
Description	Remark	Quantity	Part number
Hose	I.D. 25 (1"), both ends M 42x2 conical seal 24°, length 2300 mm (91 in.)	2	3360 9923 40
Hose	I.D. 25 (1"), both ends M 42x2 conical seal 24°, length 2800 mm (110 in.)	2	3361 8538 59

Optional equipment

Description	Remark	Quantity	Part number
Chisel paste for ContiLube® II	12 x 500 g (1.1 lbs)	1	3363 0912 00
Grease gun for cartridge ContiLube® II		1	3363 0345 67
Grease nipple		1	3363 0433 77
Service box no. I with nitrogen cylinder	2 l 0.43 gal (0.53 US gal)	1	3363 0898 44
Service box no. III without nitrogen cylinder		1	3363 0949 40
Test gauge lower wear bush		1	3363 0905 21
Inside callipers upper wear bush		1	3363 0949 52
Adapter plate matching the carrier Consult the Atlas Copco Customer Center/Dealer in your area.		1	-
Base plate with threaded inserts		1	3363 0997 97
Bolt kit		1	3363 0945 37
Base plate with through borings		1	3363 1006 95
Bolt kit		1	3363 0945 74
Allen key	19 mm for bolt kit	1	3360 2092 53
Adapter kit for underwater applications		1	3363 0905 31
Piston retainer		1	3363 0929 75

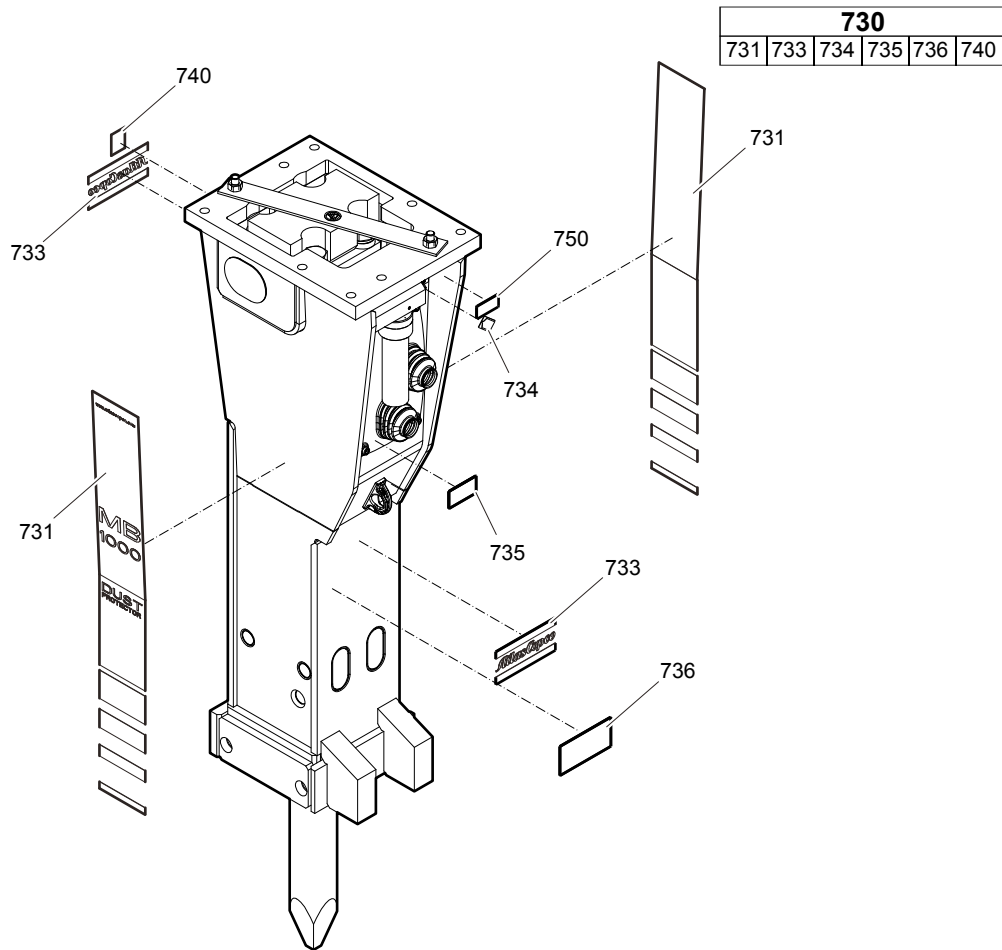
Kits

Label kit MB 1000



No.	Description	Remark	Quantity	Part number
700(701-710)	Label kit MB 1000		1	3363 0943 06
701	Product label	"MB 1000"	2	-
703	Product label	"Atlas Copco"	2	-
704	Lubricating symbol		1	-
705	Label gas pressure		2	-
706	Label working tools		1	-
710	Sound power label		1	-
720	Name plate	Consult the Atlas Copco Customer Center/Dealer in your area.	1	-

Label kit MB 1000 DustProtector



No.	Description	Remark	Quantity	Part number
730(731-740)	Label kit MB 1000 DP		1	3363 0943 07
731	Product label	"MB 1000 DP"	2	-
733	Product label	"Atlas Copco"	2	-
734	Lubricating symbol		1	-
735	Label gas pressure		2	-
736	Label working tools		1	-
740	Sound power label		1	-
750	Name plate	Consult the Atlas Copco Customer Center/Dealer in your area.	1	-

Seal kit

No.	Description	Remark	Quantity	Part number
	Seal kit		1	3363 0894 17
120	O-ring		1	3360 3143 76
122	Seal		1	3363 0852 76
123	Seal		2	3363 0852 38
124	O-ring		2	3363 3280 53
182	Threaded plug		1	3360 4784 26
183	O-ring		1	3360 1751 25
303	O-ring		1	3363 0342 50
305	Wiper		1	3363 0852 42
315	O-ring		1	3360 4781 71
385	Seal		1	3363 0852 39
386	Seal		1	3360 9209 30
387	O-ring		1	3360 9209 32
397	O-ring		2	3360 3145 51

Plastic parts kit

No.	Description	Remark	Quantity	Part number
	Plastic parts kit		1	3363 0879 19
2	Elastic pad		1	3363 0828 99
3	Shock absorber		2	3361 8522 37
4	Guide plate		2	3363 0844 33
6	Guide plate		1	3363 0842 31
7	Guide plate		2	3363 0828 97

Tensioning bolt kit

No.	Description	Remark	Quantity	Part number
	Tensioning bolt kit		1	3363 0943 48
191	Tensioning bolt		2	3363 0901 15
192	Washer		2	3363 0936 45
487	Threaded insert		2	3363 0894 19
	Anti-Seize 120 g		1	3363 0943 00

DustProtector kit

No.	Description	Remark	Quantity	Part number
	DustProtector kit		1	3363 0943 84
11	Floating ring	tribolid	1	3363 0853 28
12	Counter ring		1	3363 0828 77
13	Guide ring		1	3363 0828 79
14	Bolt		2	3363 0853 26
15	Locking bush		2	3361 8543 63

Noise protection kit

No.	Description	Remark	Quantity	Part number
	Noise protection kit		1	3363 0980 59
31	Cover		1	3363 0860 19
32	Plug		2	3363 0860 11
33	Plug		10	3362 2678 97
34	Plate		1	3362 2679 98
35	Allen screw		4	3360 1007 91
36	Pair of lock washers		4	3361 8505 96

Lower breaker part kit

No.	Description	Remark	Quantity	Part number
	Lower breaker part kit		1	3363 0943 67
401	Retainer bar		2	3363 0840 75
402	Bolt		2	3363 0851 10
403	Plug		4	3362 2629 25
482	Impact ring		1	3363 0840 77
483	Wear bush		1	3363 0840 71
484	Wear bush	steel	1	3363 0905 03
485	Bolt		2	3363 0851 10
486	Locking bush		4	3363 0330 43
	Chisel paste		1	3315 0381 00
	Test gauge		1	3363 0905 21

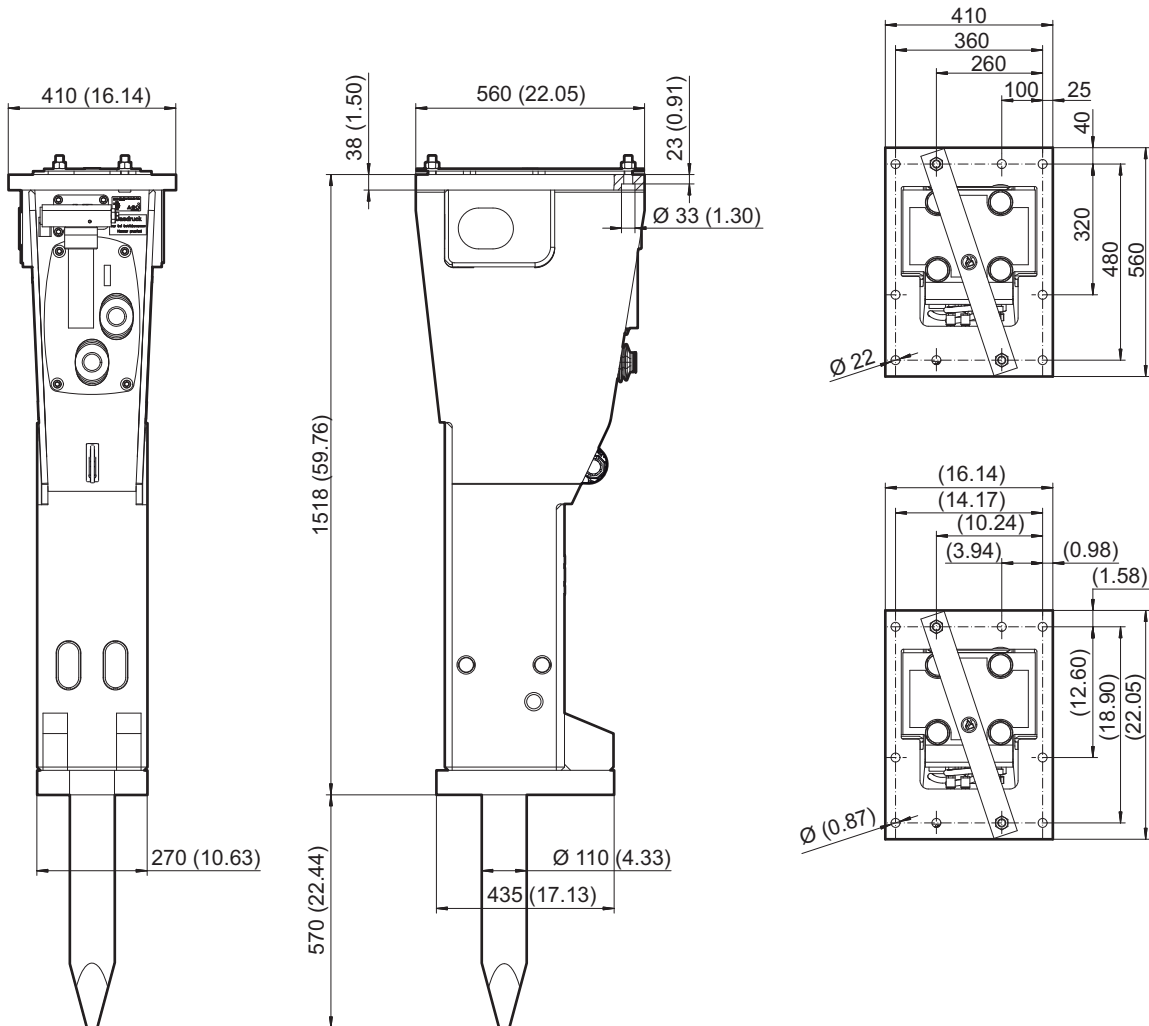
Lower breaker part kit DustProtector

No.	Description	Remark	Quantity	Part number
	Lower breaker part kit		1	3363 0943 68
18	Base for wiper		1	3363 0905 05
19	Wiper		1	3363 0853 27
401	Retainer bar		2	3363 0840 75
402	Bolt		2	3363 0851 10
403	Plug		4	3362 2629 25
482	Impact ring		1	3363 0840 77
483	Wear bush		1	3363 0840 71
484	Wear bush	steel	1	3363 0905 03
485	Bolt		2	3363 0851 10
486	Locking bush		4	3363 0330 43
	Chisel paste		1	3315 0381 00
	Test gauge		1	3363 0905 21

Dimensions

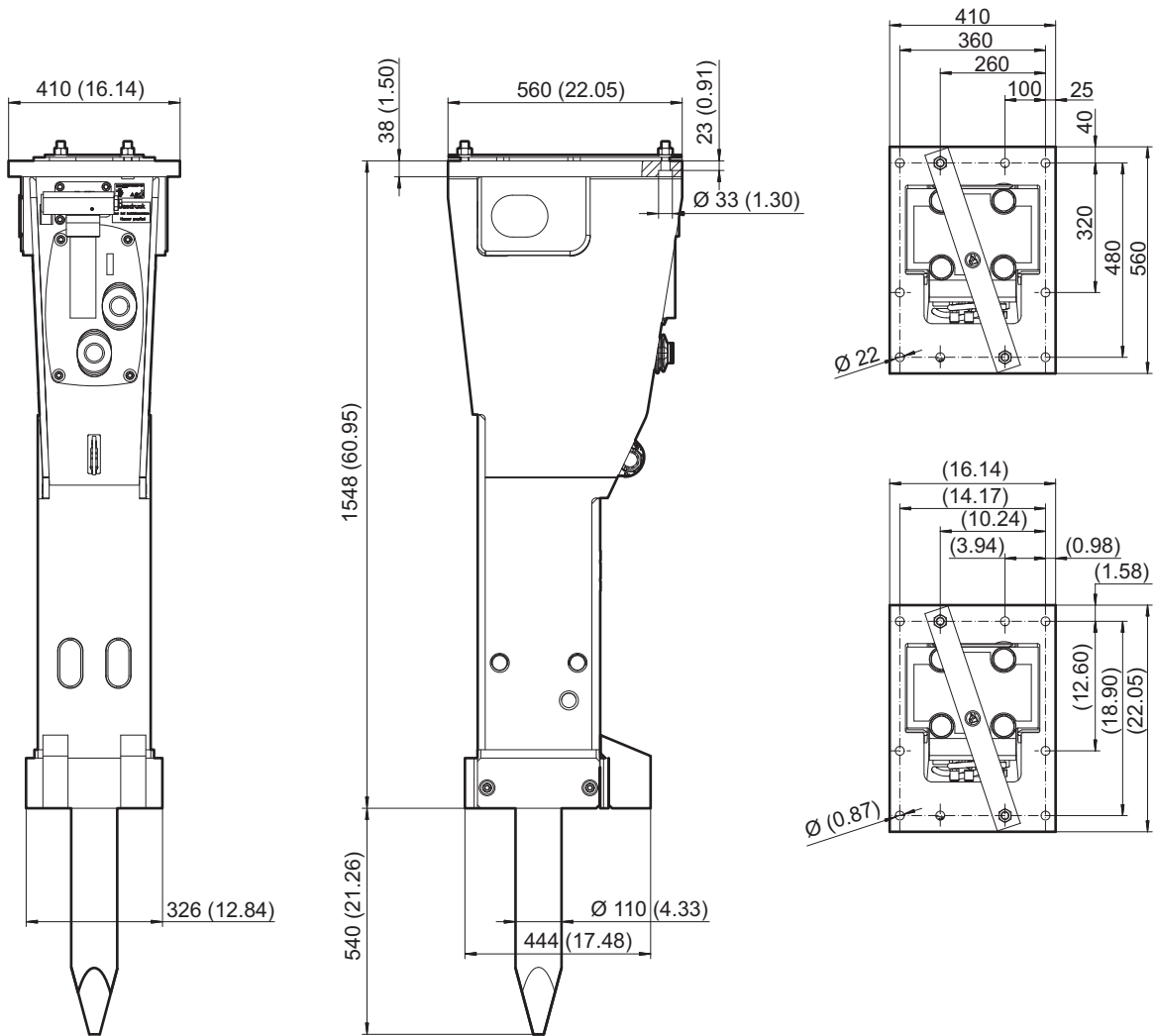
Dimensions MB 1000

mm (inch)



Dimensions MB 1000 DustProtector

mm (inch)



Any unauthorized use or copying of the contents or any part thereof is prohibited.
This applies in particular to trademarks, model denominations, part numbers, and
drawings.

© 2012 Atlas Copco Construction Tools GmbH | No. 3390 7035 01 | 2012-12-10

Atlas Copco

www.atlascopco.com